

National Overview of Plastic Contamination in 2022

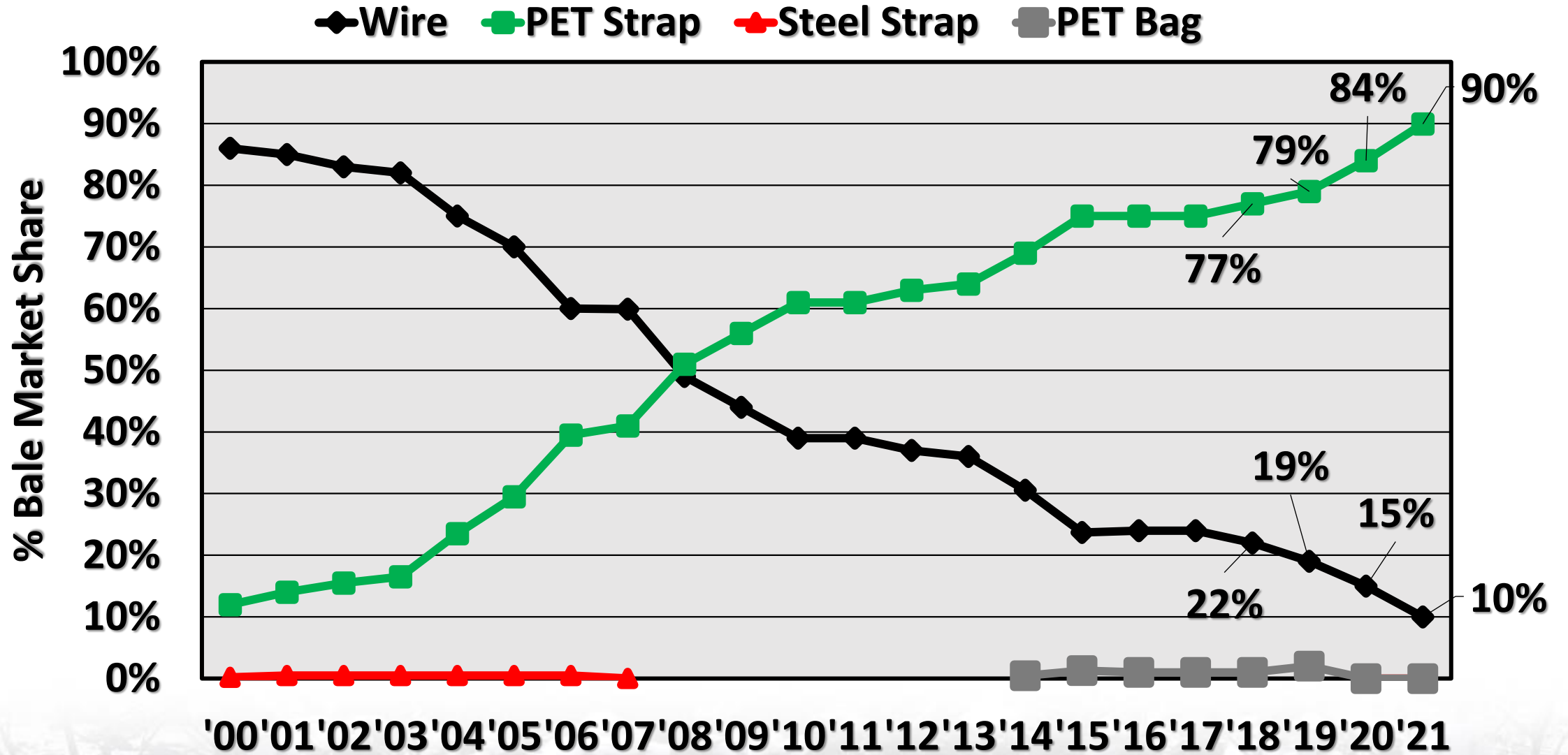
Plastics in Cotton III Seminar 2022

Wednesday, May 11, 2022

A background image of a cotton field with many white cotton bolls on the plants. The image is semi-transparent, allowing the text to be clearly visible.

2021 Packaging Material Use

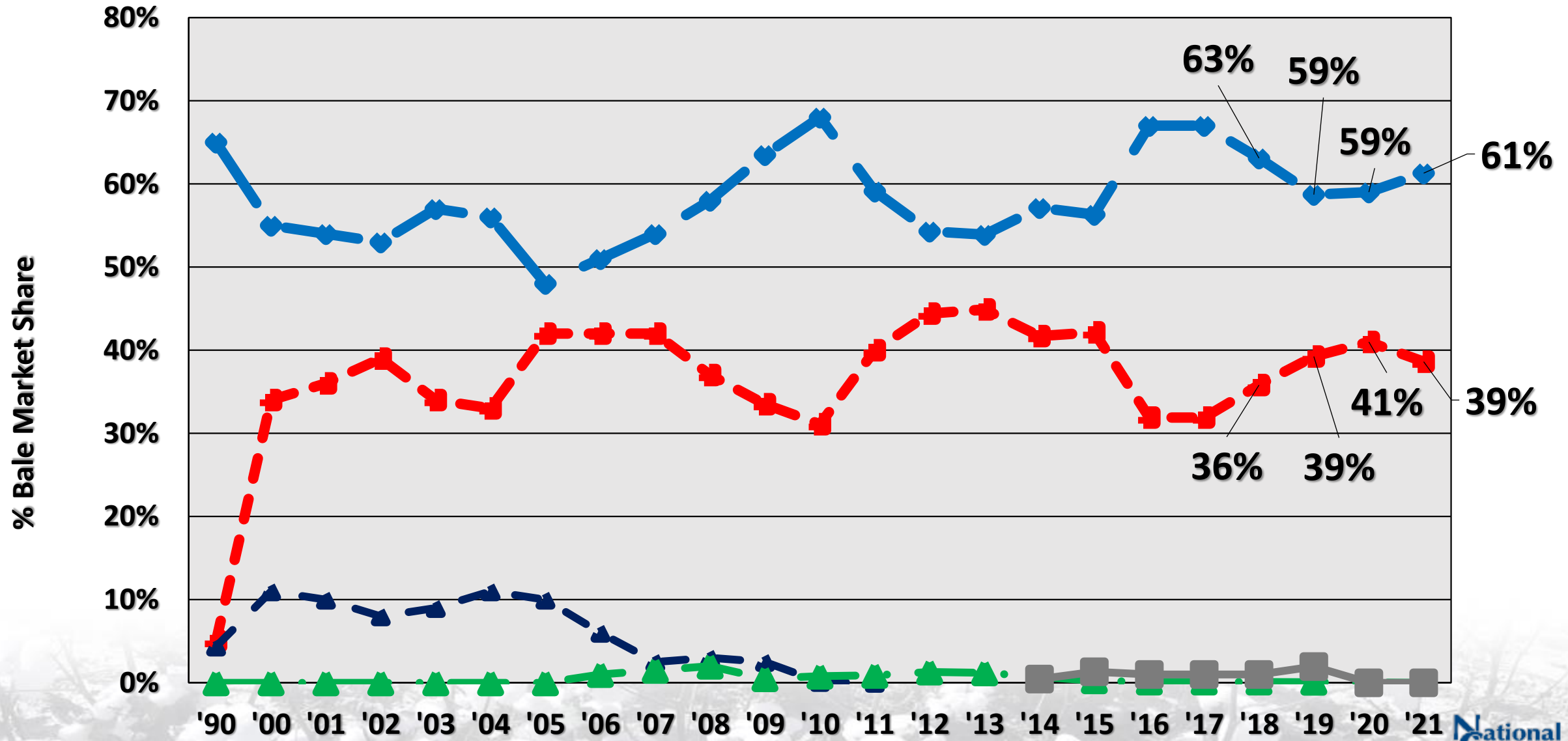
Tie Use Trend (Bale Basis)



*Based on January 31 B&T use data from EWR, Inc.

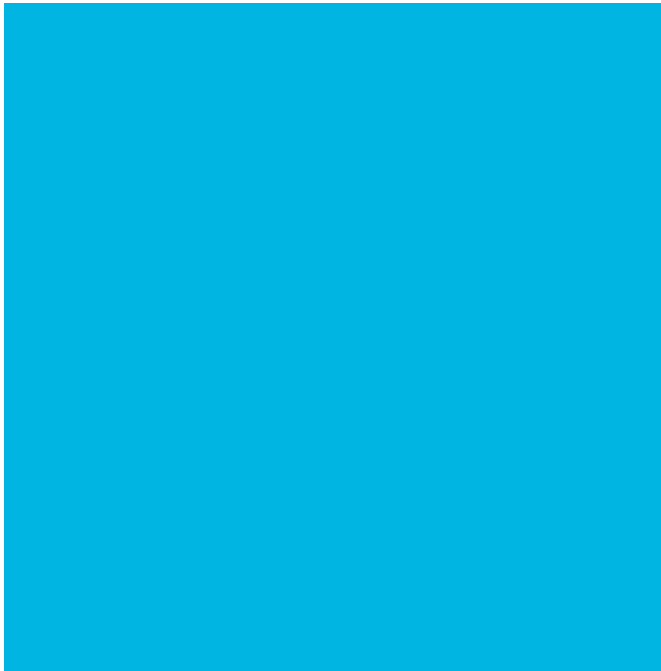
Bagging Use Trend (Bale Basis)

◆ Polypropylene ■ PE Film ▲ Burlap ▲ Cotton ■ PET



*Based on January 31 B&T use data from EWR, Inc.

Approved Woven Polypropylene Color



PANTONE®
306 C

- Pg. 11- 2.2.3.1.2.3. Color: The color of the fabric containing HALS shall be translucent white, translucent light gold, or translucent light blue equivalent to Pantone color 306 C, unless otherwise approved by the JCIBPC.



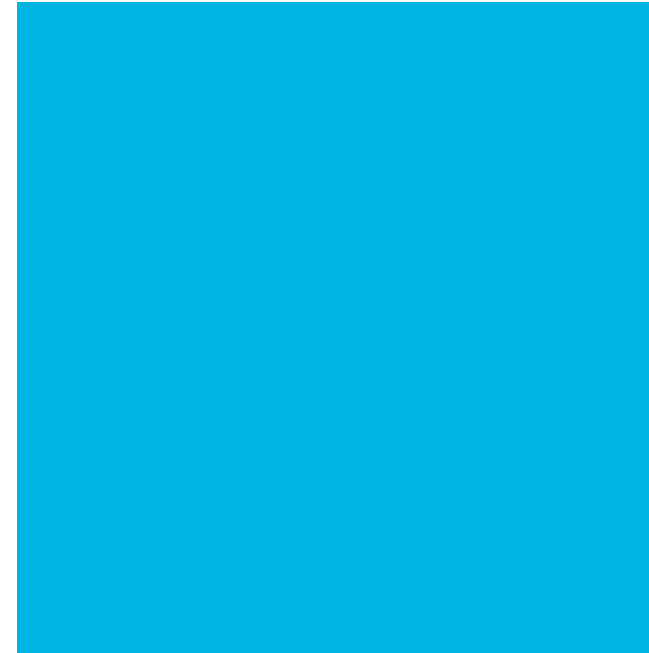
Crop Year	Estimated Blue Bags Produced	Estimated Woven PP Bales in Crop
2020 1 st year available	1,350,000	10.5 Mil/13%
2021	2,000,000	9.8 Mill/20%
2022 Estimated	8,000,000	





2022 Bale Packaging Specifications

- Transparent blue (Pantone 306C) added as an additional color option for PE film bagging



PANTONE®
306 C

A background image of a cotton field with many white cotton bolls on the plants. The text is overlaid in the center.

Cotton Bagging Project Update

Cotton Bale Bag Project

- Test to determine the market supply chain acceptance of the fully-approved 3lb. cotton bag (1974)
- 40,000 bags placed at 11 gins in MS and SW regions in 2020
- Collected survey data and analyzed results of bagging lab testing







Cotton Bagging 2022 Plans

Place a small number of bags at 3 different regional warehouses:

- **1.9 lb Developmental**
- **2.5 lb Developmental**
- **3 lb Approved**
- **Woven Polypropylene**

Collect data on durability and perform cost analysis between the different bagging weights as well as tag adhesives



Production Quality Issues

Woven Polypropylene Contamination







Bagging Manufacturers Meeting Summary

- Met with all the approved PP bagging manufacturers on Oct 15,2021
- All comments confirmed it looked to be a coating issue in the bagging
 - Coating should be thermally bonded to the tapes
- This was a quality control issue- not a specifications issue

PET Strap Wax Issue



A background image of a cotton field with many white cotton bolls on the plants.

ASABE Round Module Wrap Standard

2021- Research and Education- Lint Contamination Pg. 7 Lines 8-16

k. Support the efforts of the American Society of Agricultural and Biological Engineers (ASABE) in the development and adoption of the amended (X615.2) Cotton Module Cover Material Performance Standard to include round module wrap materials. The standard should address key physical properties of the wrap material such as tensile strength, abrasion resistance, puncture resistance, etc.; appropriate adhesive properties including effectiveness over a range of anticipated temperatures encountered at harvest; and acceptable colors that can best be easily detected by existing contamination detection technologies.

ASABE Round Module Wrap Standard

- February 15, 2022- Approval and publication of ASABE S615.2 FEB2022, Cotton Module Cover Material Performance, is complete.
- Provides protection to the industry from inferior module wrap products that are beginning to enter the US market. Tama Premium (yellow and pink) wrap product performs at a level acceptable to the US cotton industry, the standard has been developed from measurements on this wrap.
- The NCC will be the depository for the names of the manufactures who meet the minimum standard

wrapstandard@cotton.org.

A background image of a cotton field with many white cotton bolls on green stems.

Contamination







Prevention of Plastic Contamination

Prevention of Plastic Contamination – Recommended Best Practices for Producers & Ginners



Introduction by Gary Adams

Chapter 1: Introduction to Prevention of Plastic Contamination

Chapter 2: In The Field

Chapter 3: During Harvest

Chapter 4: Machine Operation

Chapter 5: Module Handling

Chapter 6: How to Stage Modules in the Field

Chapter 7: Loading a Module Truck

Chapter 8: Loading a Flatbed Truck

Chapter 9: Unloading Modules Onto a Gin Yard

Chapter 10: How to Handle Round Modules at the Gin

Chapter 11: Unwrapping/ Cutting Open Modules

Chapter 12: Conclusion

Play All: Prevention of Plastic Contamination

Meeting Materials

Exit

A background image of a cotton field with many white cotton bolls on the plants.

Thank you!

Lauren Krogman

NCC Technical Services Staff

lkrogman@cotton.org