

**2008 National Cotton Council
Survey of
Bale Packaging Preferences
and Contamination
Occurrences**

**Summary of
Foreign Mill Responses**



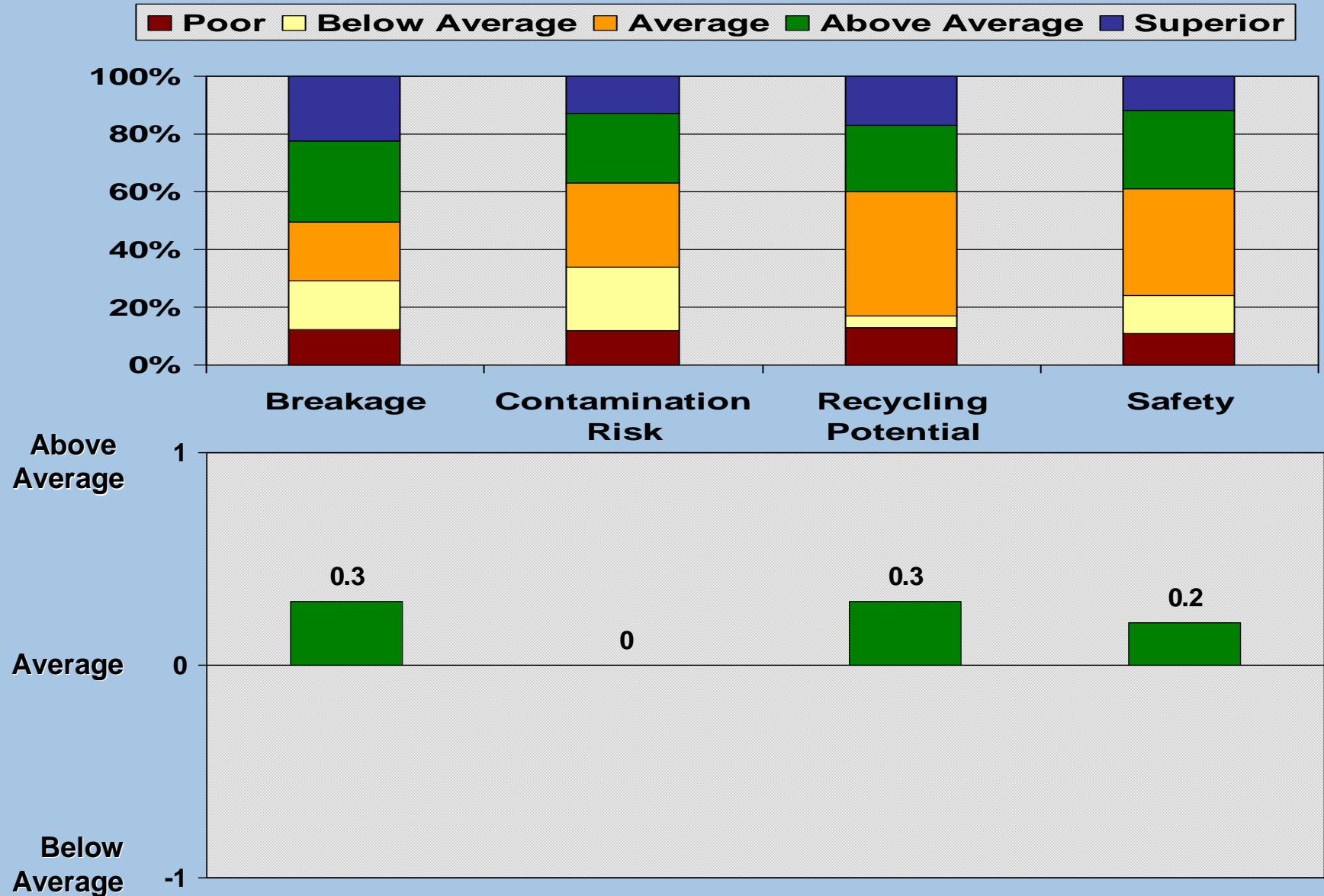
SECTION 1

Responses to Questions About Tie Preferences

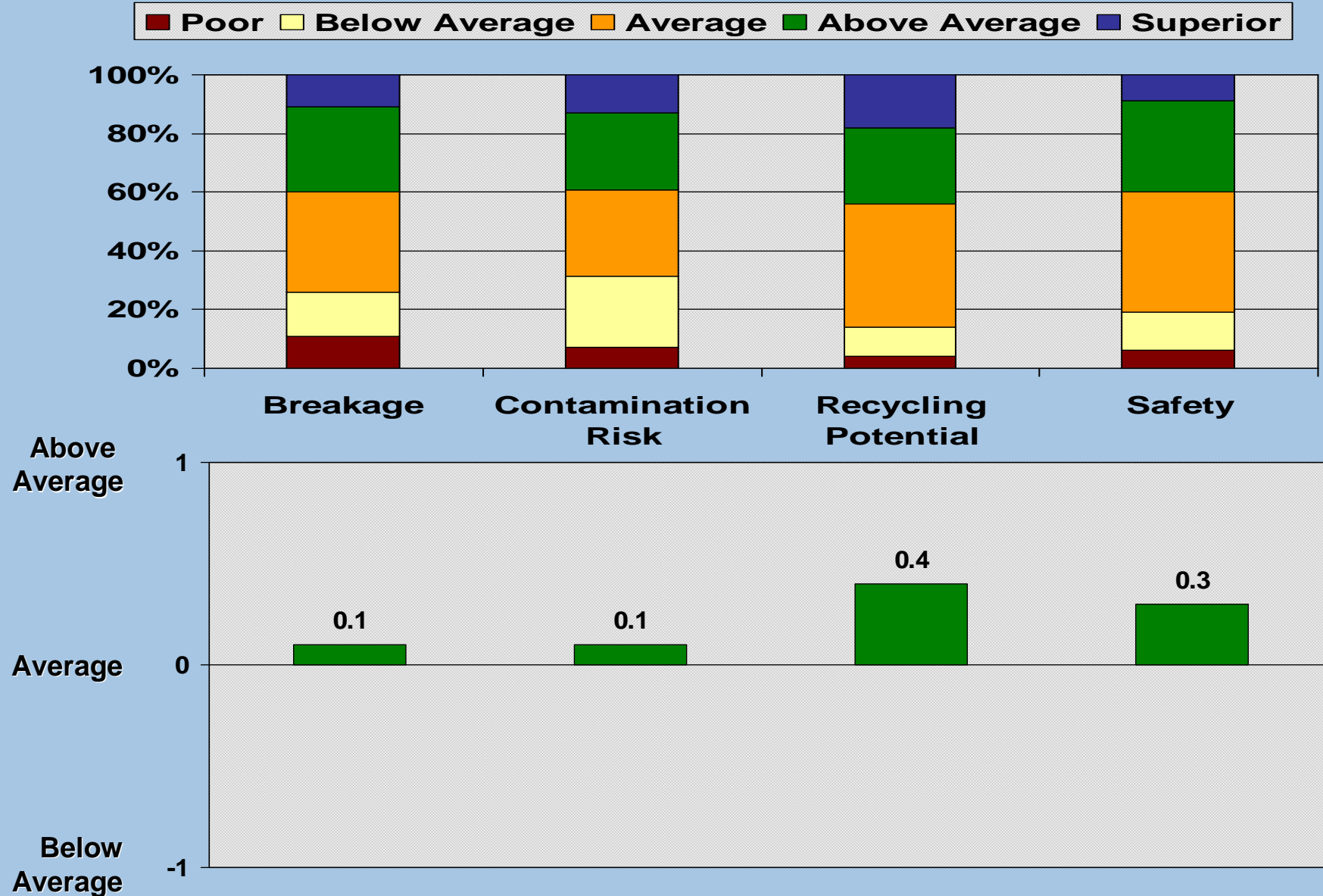
Foreign Mills



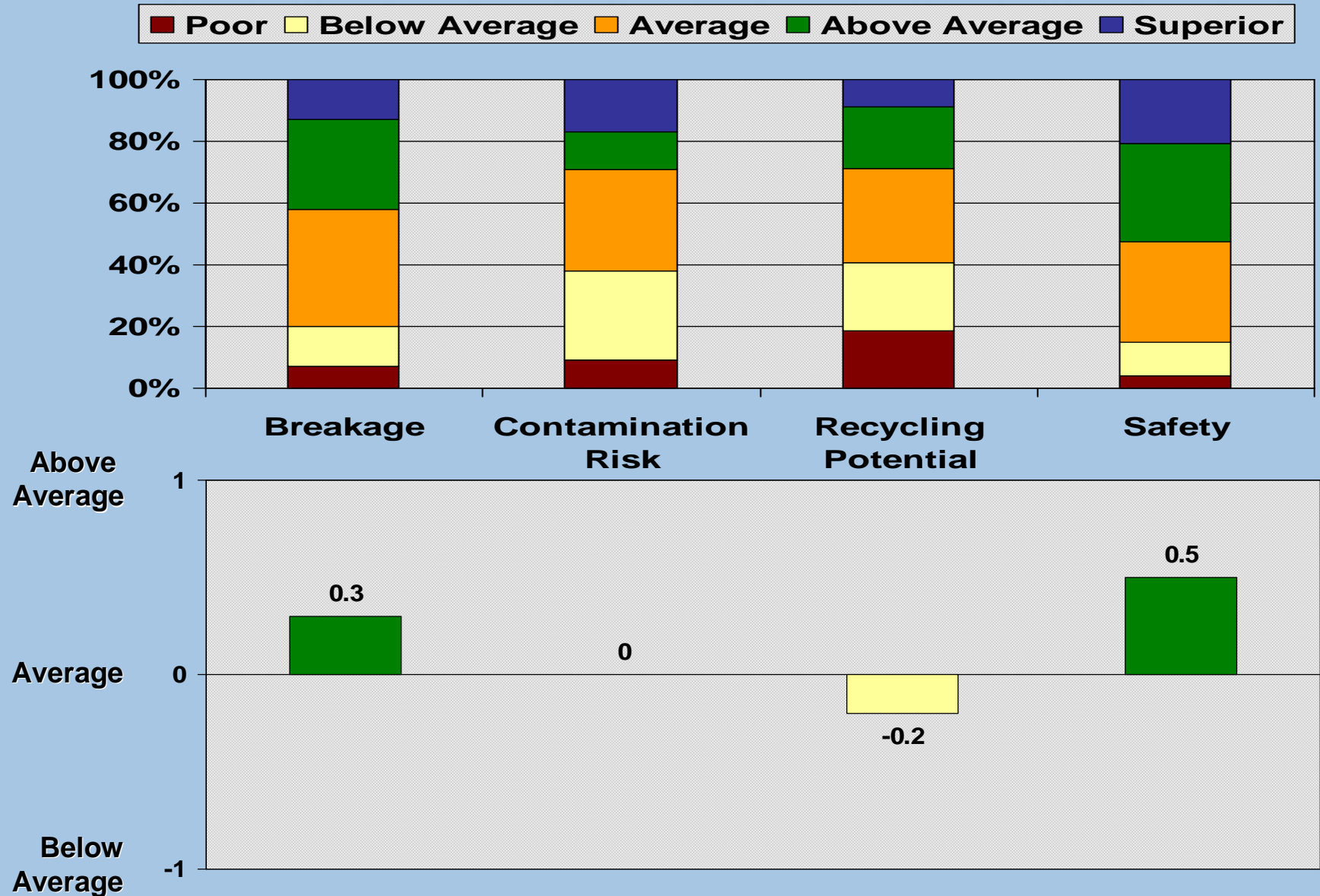
10. For each category, rank the performance of STEEL STRAP bale ties relative to other bale tie materials



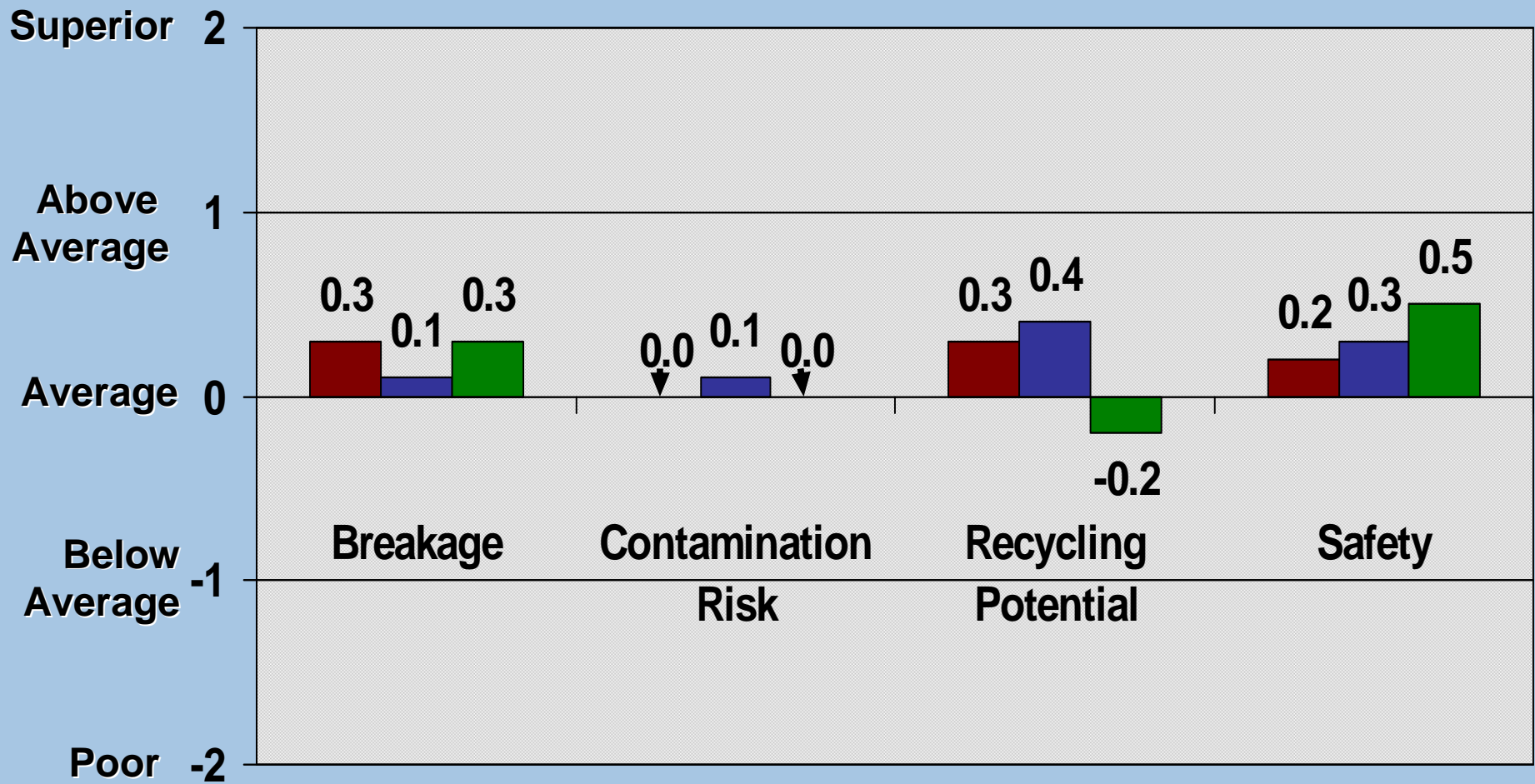
11. For each category, rank the performance of WIRE bale ties relative to other bale tie materials



13. For each category, rank the performance of PET PLASTIC STRAP relative to other bale tie materials



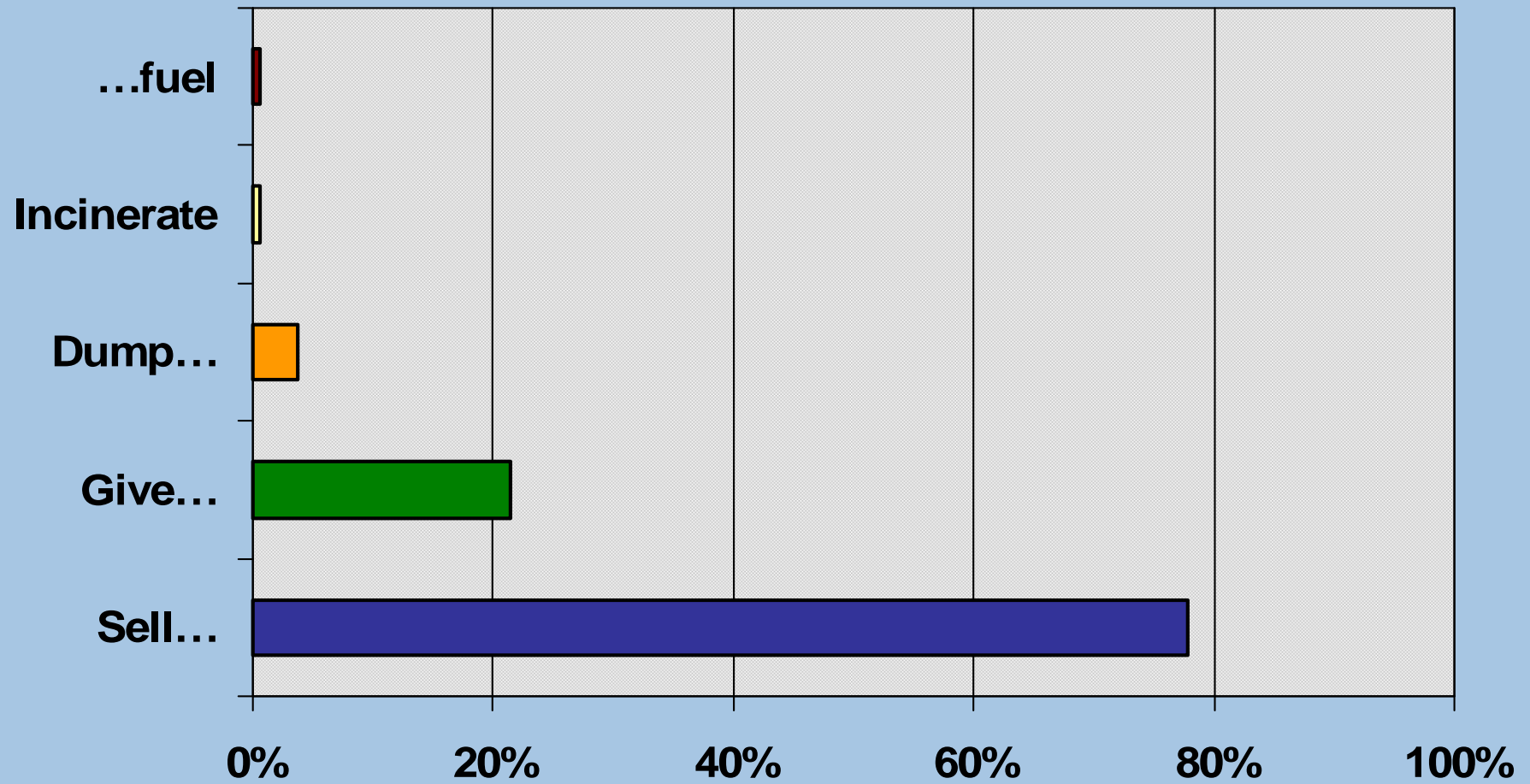
10, 11, 13 Side by Side – For each category, rank the relative performance of 3 types of bale ties



14. Overall, describe your preference level for each bale tie material

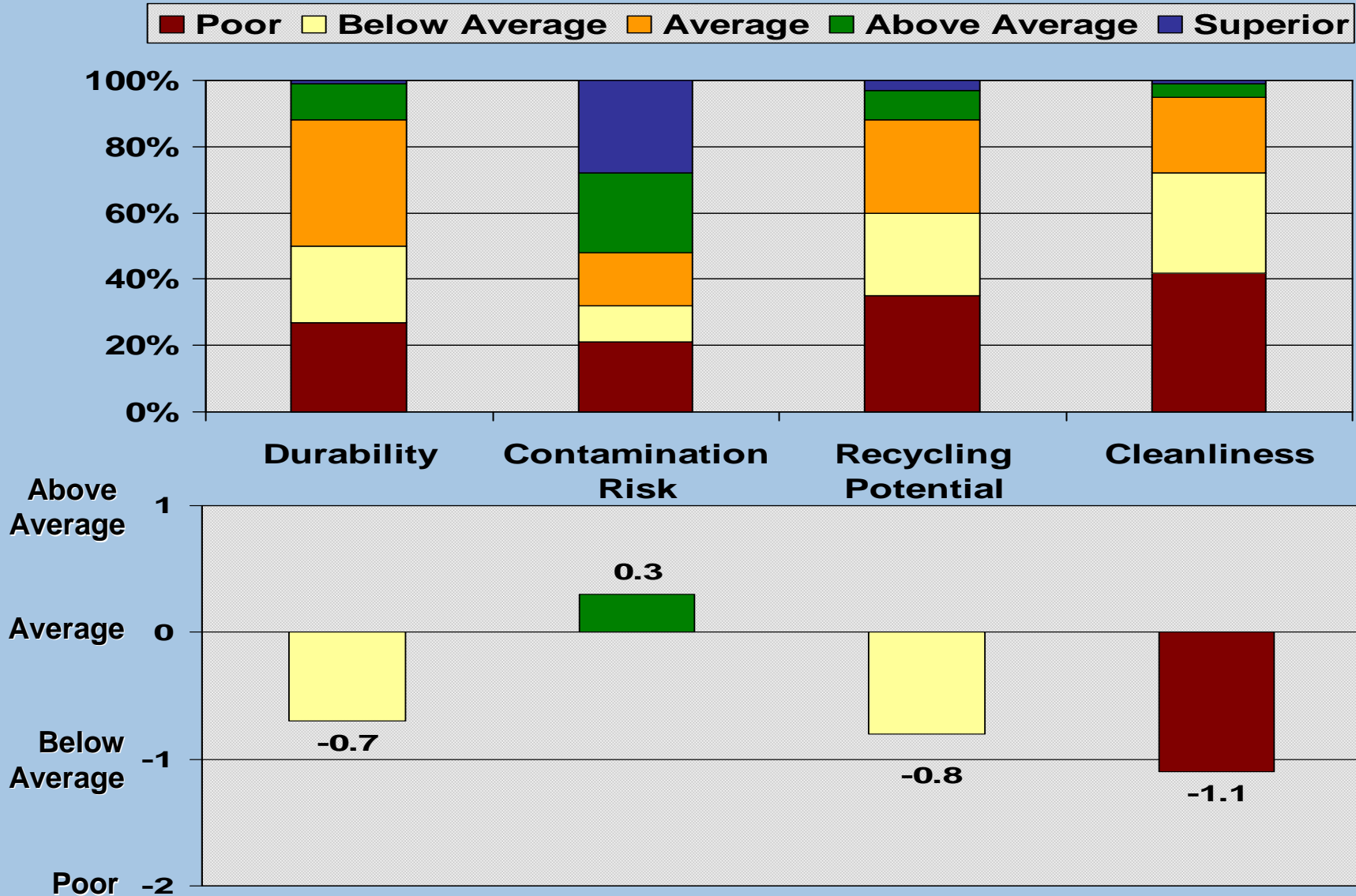
(2008 Use)	Steel Strap (0%)	Wire (49%)	PET Plastic Strap (51%)
Most Preferred	6%	15%	25%
Preferred	28%	20%	31%
Indifferent	37%	32%	23%
Not Preferred	20%	25%	13%
Least Preferred	8%	8%	8%
2 Most Preferred (to) -2 Least Preferred	0	0.1	0.5

15. How do you dispose of bale tie materials after opening bales?

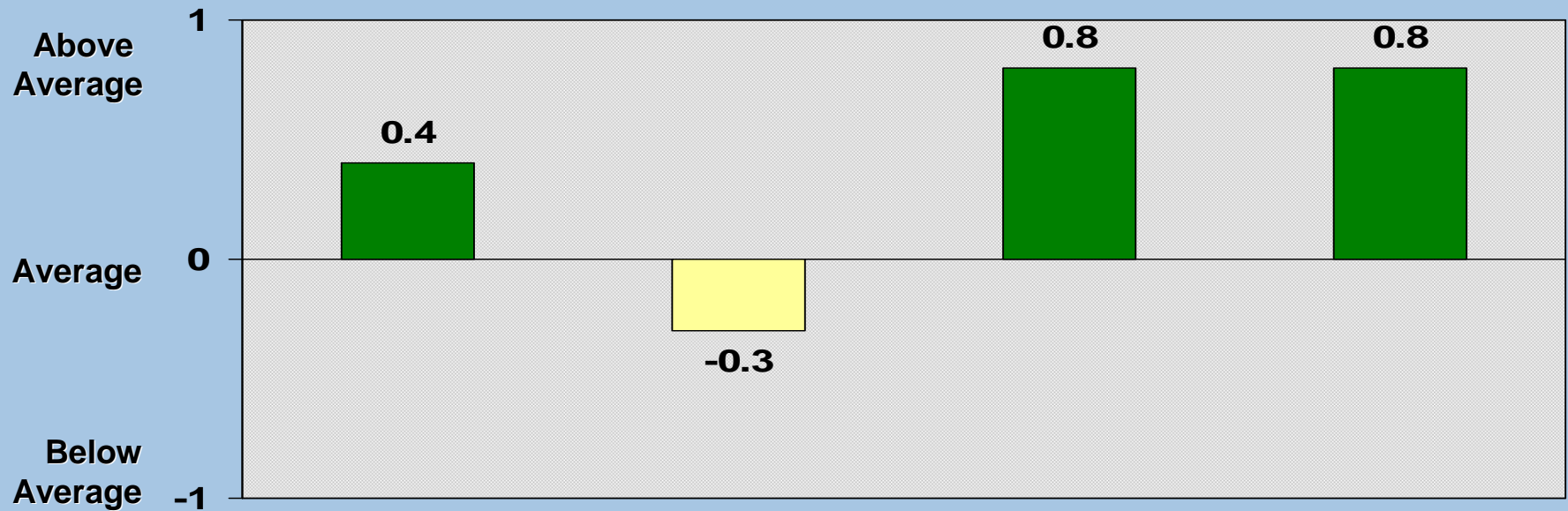
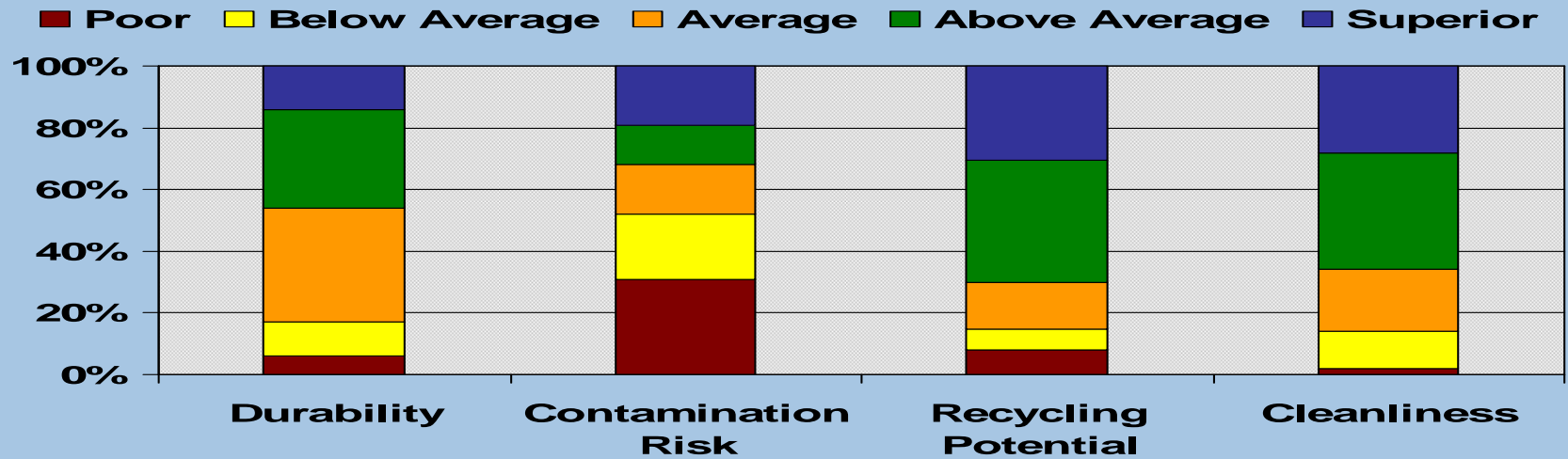


SECTION 2
Responses to
Questions about
Bagging Preferences
Foreign Mills

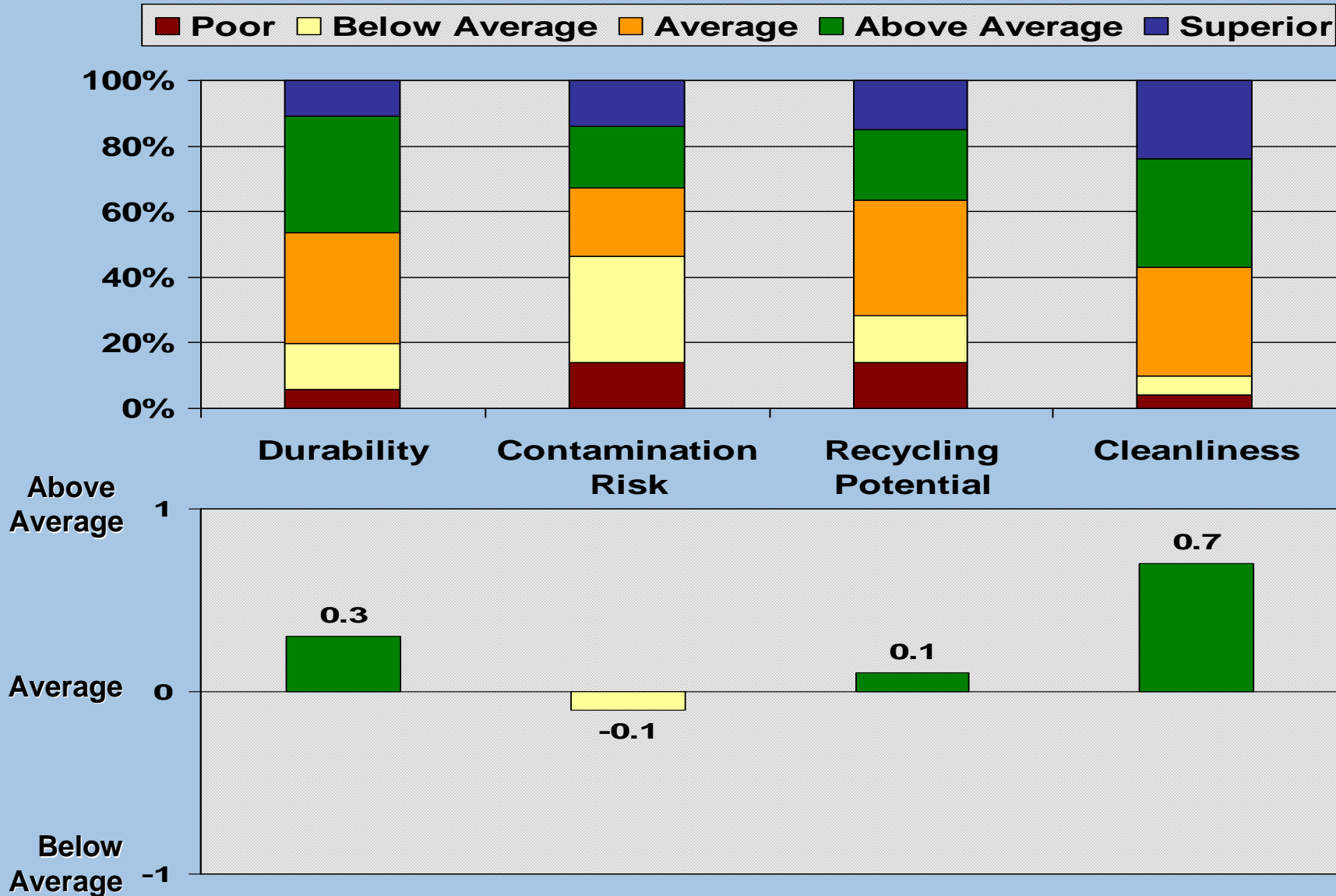
16. For each category, rank the performance of BURLAP/HESSIAN/JUTE bale bags relative to other bale bag materials



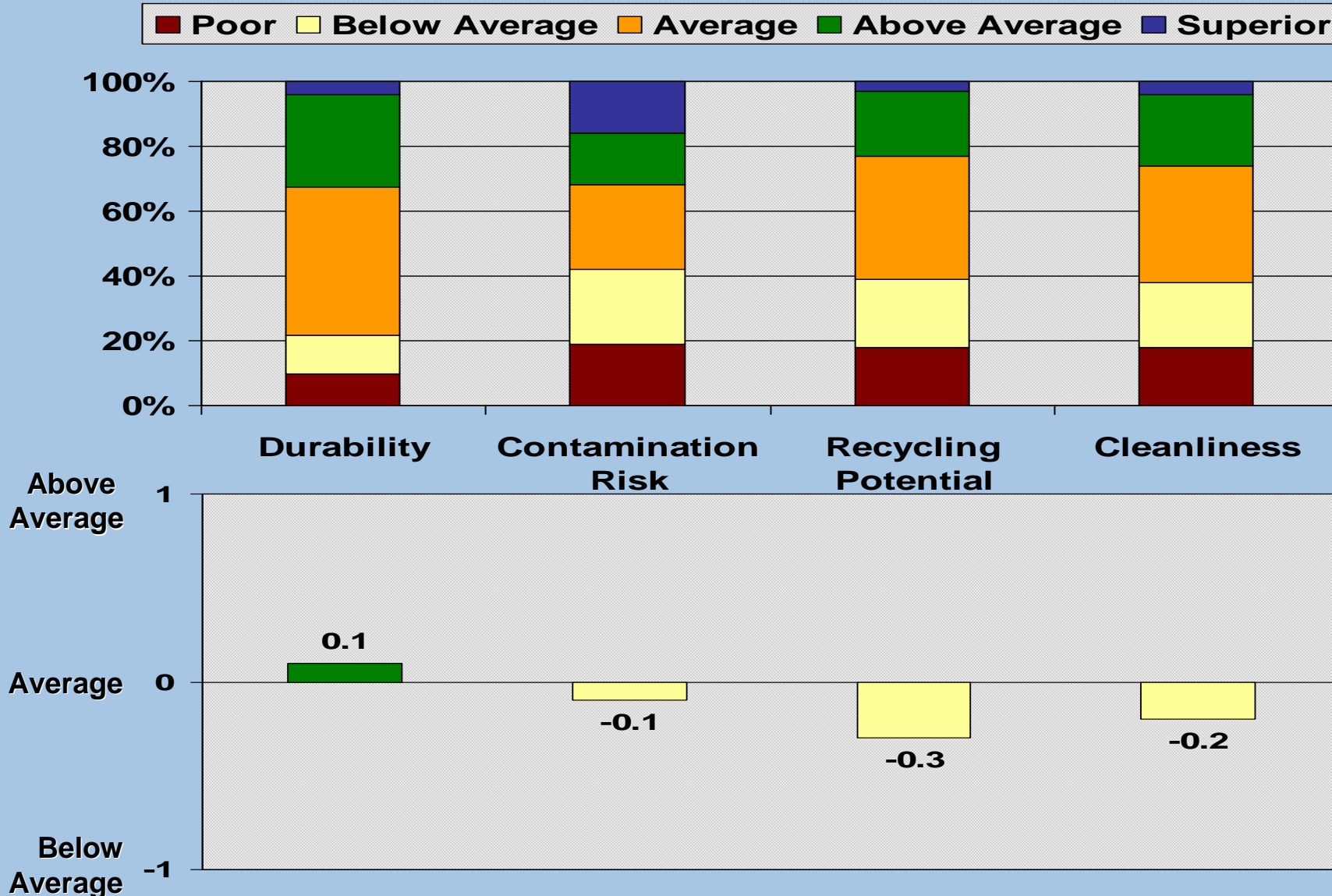
17. For each category, rank the performance of COTTON bale bags relative to other bale bag materials



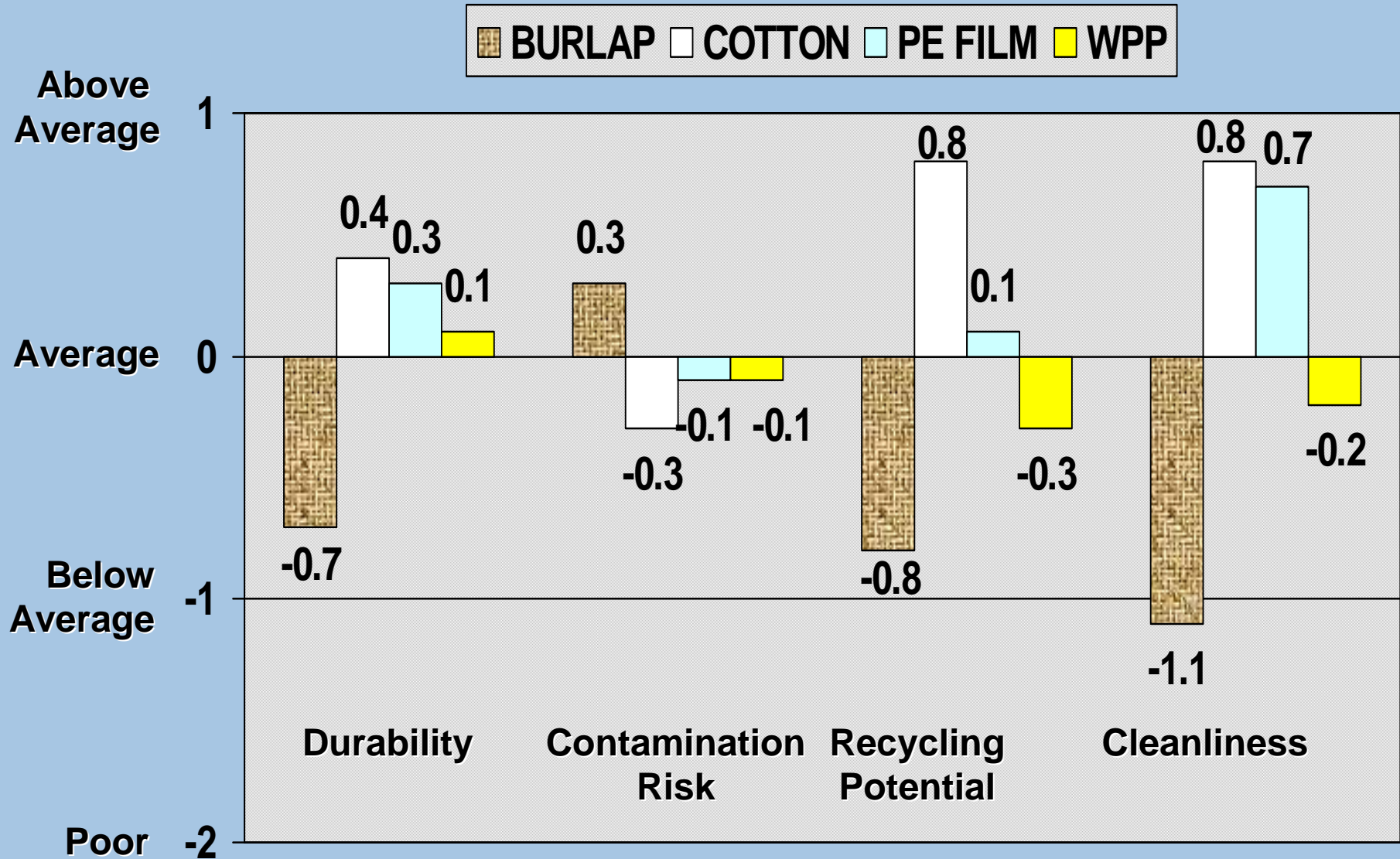
18. For each category, rank the performance of POLYETHYLENE (PE) FILM bale bags relative to other bale bag materials



19. For each category, rank the performance of WOVEN POLYPROPYLENE bale bags relative to other bale bag materials



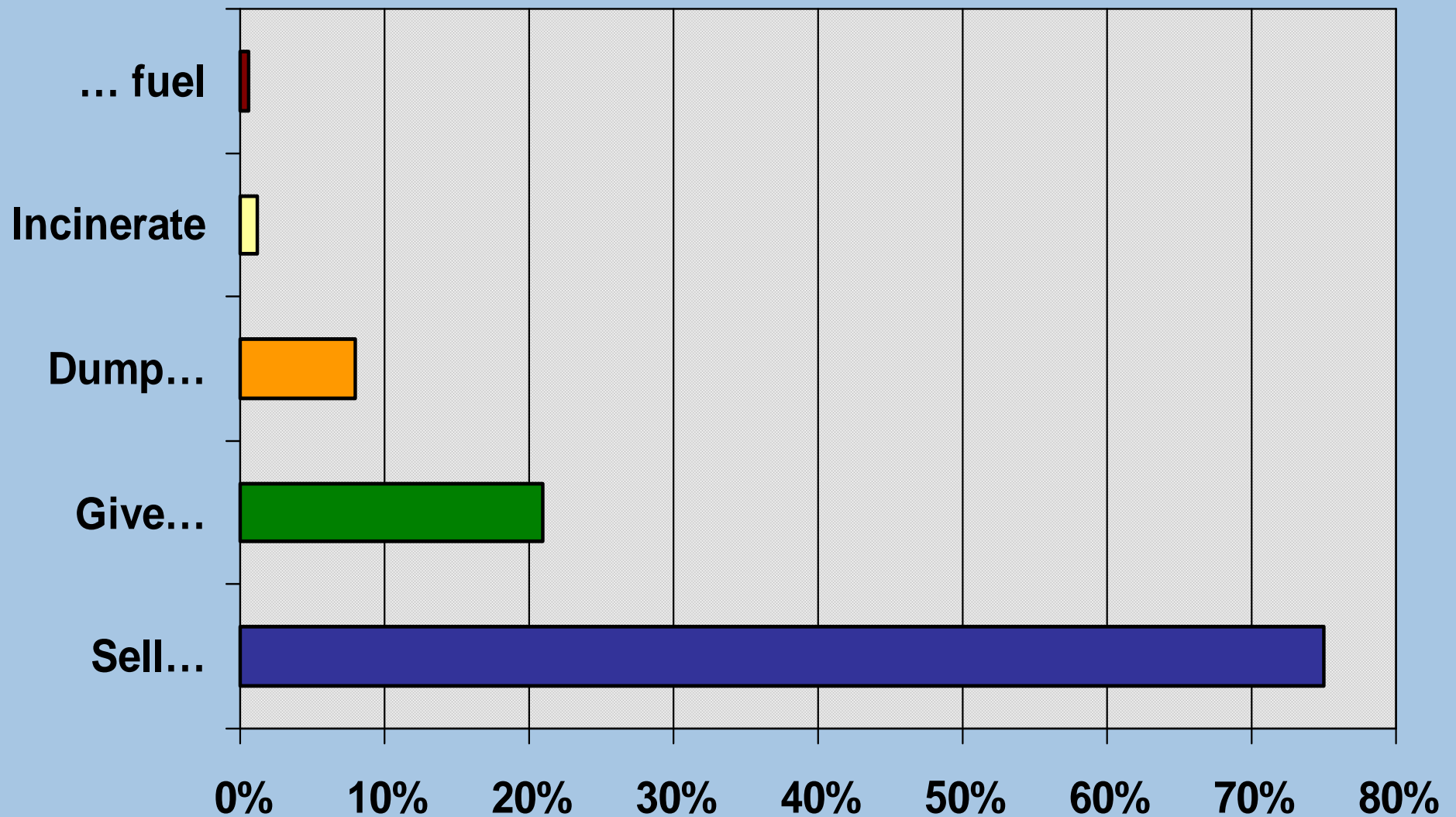
16, 17, 18, 19 Side by Side – For each category, rank the performance of VARIOUS bale bags relative to other bale bags



20. Overall, describe your preference level for each bag material

(2008 US Use)	Burlap (2%)	Cotton (3%)	PE Film (37%)	WPP (58%)
Most Preferred	6%	39%	44%	16%
Preferred	13%	10%	21%	24%
Indifferent	1%	42%	18%	5%
Not Preferred	26%	7%	9%	32%
Least Preferred	55%	2%	8%	23%
2 Most Preferred (to) -2 Least referred	-1.3	1.1	0.5	-0.5

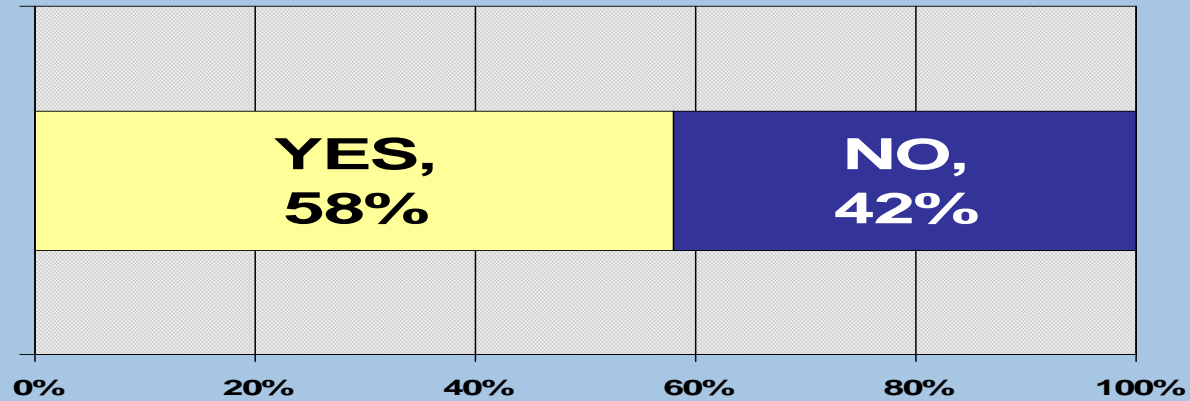
23. How do you dispose of bale bagging materials after opening bales?



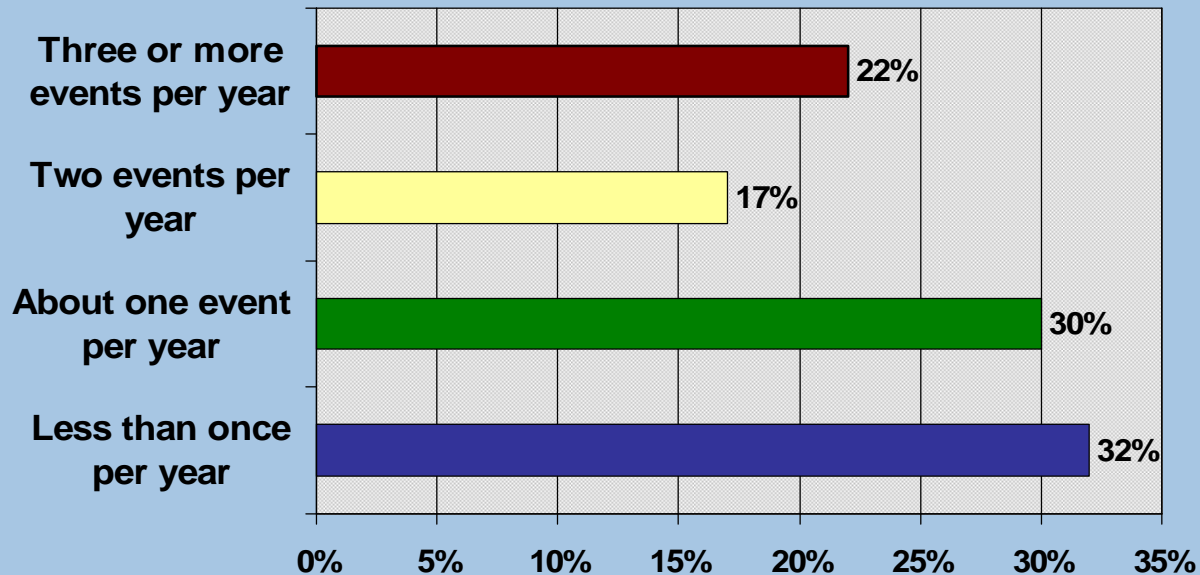
SECTION 3
Responses to Questions
About Contamination
Experience

Foreign Mills

25. Has this facility had cotton fiber contamination in the past 12 months?



26. How frequently do you experience contamination problems with U.S. cotton?



27. What are the predominant colors of contaminants?

Specify the relative frequency that you encounter each contaminate color:

	Black	Blue	Orange	Red	White	Yellow
Almost Never	33%	61%	70%	60%	45%	48%
Rare	23%	16%	17%	18%	21%	24%
Occasionally	25%	16%	11%	15%	19%	18%
Frequent	15%	7%	2%	7%	11%	9%
Very Frequent	4%	0%	0.7%	0%	4%	0.7%

28. What are the predominant types of contaminants?

Specify the relative frequency that you encounter each contaminate type:

	Plastic	Colored Polyester	Colored Nylon	Colored Cotton
Almost Never	33%	45%	49%	50%
Rare	22%	26%	27%	23%
Occasionally	28%	16%	16%	18%
Frequent	16%	11%	6%	9%
Very Frequent	2%	2%	2%	1%

30. In comparison with the amount of contamination in other cotton growths, U.S. cotton typically has...

	%	No.
...significantly less contamination.	54%	75
...less contamination.	35%	50
...about the same.	9%	13
...more contamination.	1%	2
...significantly more contamination.	0%	0

The End

**Send Questions or
Comments to:**

JCIBPC@cotton.org

