

LEAF OSMOTIC POTENTIAL AND MORPHOLOGICAL TRAITS OF 43 COTTON VARIETIES GROWING IN A RAINFALL GRADIENT FROM SOUTHWEST TO CENTRAL TEXAS

Xuejun Dong

Texas A&M AgriLife Research and Extension Center at Uvalde

Uvalde, Texas

Dale A. Mott

Texas A&M AgriLife Extension Service

College Station, Texas

Abstract

Drought tolerance strongly influences the growth, development and production of cotton under both dryland and irrigated systems. With the rapid release of new cotton varieties, up-to-date information on the fundamental relations between leaf morpho-physiological traits and drought tolerance is needed for both cotton farmers and researchers. We measured leaf osmotic potential at full turgor and leaf dry matter content for 43 cotton varieties in southwest and central Texas and found that increased investment of carbon in leaf construction in cotton varieties grown under a dryland production regime were associated with an increased, not decreased, lint yield, which was in contrast to the trend displayed in the irrigated production regimes. This suggests that the relationship between drought tolerance leaf traits and lint yield in current cotton varieties is environment dependent. Specifically, for better yield performance, leaf osmotic potential and leaf dry matter content in cotton genotypes may be selected in different directions depending on whether the target environment is a dryland or irrigated production system.

Introduction

To produce one kilogram of dry matter, plants may lose several hundred kilograms of water through transpiration (Black, 1968). The high rate of water loss in daytime hours usually cannot be balanced by root water uptake, and this can lead to severe dehydration for plant leaves (Schulze et al. 1987). Plants rely on two main mechanisms to delay leaf wilting: one is to reduce osmotic potential by accumulating solutes in cells, and the other is to increase cell wall elasticity by increasing carbon investment in cell wall construction (Cheung et al., 1975; Robichaux et al. 1986). Both mechanisms are shown to be strongly correlated in natural vegetation (Monson & Smith, 1982; Dong & Zhang, 2001) and simple, rapid methods have been developed to estimate these parameters (Bartlett et al., 2012; Griffin-Nolan et al., 2019; Petruzzellis et al., 2019). However, data are relatively limited to characterize cultivated crop genotypes growing in water limited regions (Mart et al., 2016).

Cotton has a high capacity to survive and thrive in dry and hot environments. Yet, the growth, development and production of cotton plants is strongly influenced by drought stress under both dryland and irrigated systems. The objectives of this study are: first, to test the usefulness of leaf water relations traits to explain cotton yield performance under drought stress conditions; and second, to identify cotton varieties with superior drought tolerance capacity. The insights gained from this study are expected to be useful for cotton improvement.

Materials and Methods

The study was conducted in conjunction with Texas A&M AgriLife Extension RACE cotton trial. Six cotton fields from four locations in southwest to central Texas were selected for field sampling. The mean annual precipitation of the four locations (Crystal City, Uvalde, Lytle, and Taylor) varies from 21 to 35 inches. The cotton field in Taylor was under dryland production, and the remaining fields were under irrigated management in the 2020 growing season. Forty-three cotton varieties were used in the study (Table 1). Most of the varieties were from the RACE trial planted in Lytle and Taylor. Some of the varieties were also planted at the Uvalde Research Center, as well as producer's fields in Uvalde and Crystal City. All the cotton fields were planted from mid- to late April, except the Uvalde Research Center field, which was planted on May 5, 2020. Leaf area growth from all fields was measured once every two weeks after May 15, 2020. The measurement was done non-destructively using an optical sensor (LI-2000 Canopy Analyzer).

Leaf samples were collected twice: first at the early bloom and second at the peak bloom stage (Figure 1). On each sampling, one leaf was cut off at the base of the petiole from the 4th node counting from the top of a representative plant. Then the petiole of the leaf was immediately submerged in distilled water in a bucket, while the leaf was

exposed to the air. On the same day of leaf sampling, the collected leaves were stored in a laboratory over night with the top of the bucket covered with aluminum foil to maintain a high humidity condition in the interior of the bucket filled with leaves whose petioles were submerged in a thin layer of distilled water. The next day, water drops from the surfaces of the leaf was blotted using tissue paper and prepared for physiological measurement. One 8-mm leaf disc was punched off each of the sampled leaves, wrapped in aluminum foil, frozen in liquid nitrogen, and then stored at a -80 °C freezer awaiting osmotic potential measurement. Immediately after punching, the leaf was measured for saturate mass and area, then dried at 65 °C to measure dry mass. Leaf osmotic potential was measured using a 5520 VAPRO Vapor Pressure Osmometer following Bartlett et al. (2012). Leaf dry matter content (LDMC) was determined as the ratio of dry mass and saturate mass. On each sampling, three leaves were collected from each cotton variety. In 2020, a total of 924 leaves were collected for the measurement of cotton leaf traits. In this study, the measured leaf osmotic potential at full turgor was used as a proxy of leaf water potential at leaf turgor loss point (Bartlett et al., 2012; Petruzzellis et al., 2019), and the measured leaf dry matter content was used to indicate the cell wall elastic properties.

Cotton yield was measured by harvesting the entire plots at the Lytle and Taylor sites. The Lytle site was harvested with a cotton picker whereas the Taylor site was harvested with a cotton stripper. At the Uvalde Center field, plots were hand harvested. Sub-samples of the plots were ginned on a 20 saw Centennial Gin for turnout and lint samples were then used to obtain fiber quality. Although fiber quality was measured, this paper will only focus on the relationship between lint yield and leaf water relations traits. Linear regression was employed to depict the relationship between cotton lint yield and water relations traits, and the slopes of different regression lines were compared using the procedure of the Generalized Linear Model (GLM). Analysis of Means (ANOM, $\alpha=0.1$) was used to compare differences in measured lint yield and water relations traits among cotton varieties. Data analysis was carried out using Minitab 17.

Table 1. A list of cotton varieties used in the study.

ID	Variety	Site	ID	Variety	Site	ID	Variety	Site
1	19R132 B3XF	T	16	DG 3421 B3XF	UR,T	31	NG 4936 B3XF	L, UR, T
2	19R237 B3XF	T	17	DG 3615 B3XF	L, UR	32	NG 5007 B2XF	UR
3	20R 734 B3XF	T	18	DP 1044 B2RF	UR	33	NG 5711 B3XF	U2
4	20R 741 B3XF	T	19	DP 1646 B2XF	L, UR, T	34	PHY 340 W3FE	UR
5	20R 743 B3XF	T	20	DP 1725 B2XF	UR	35	PHY 400 W3FE	L, T
6	20R 749 B3XF	T	21	DP 1820 B3XF	T	36	PHY 480 W3FE	L, UR
7	20R 750 B3XF	T	22	DP 1845 B3XF	T	37	ST 4550 GLTP	L, T
8	20R 752 B3XF	T	23	DP 1865 B3XF	C, U1	38	ST 4848 GLT	UR
9	BX 2116 GLTP	T	24	DP 1948 B3XF	T	39	ST 4949 GLT	UR
10	BX 2141 GLTP	T	25	DP 2020 B3XF	L, T	40	ST 4990 B3XF	L, UR, T
11	BX 2191 B3XF	T	26	DP 2044 B3XF	T	41	ST 5600 NR B2XF	T
12	BX 2192 B3XF	T	27	FM 1953 GLTP	UR	42	ST 5610 B3XF	T
13	BX 2193 B3XF	T	28	FM 2398 GLTP	T	43	ST 5707 B2XF	L, T
14	BX 2194 B3XF	T	29	FM 4480 B3XF	T			
15	CG 3885 B2XF	UR	30	NG 4098 B3XF	L, UR, T			

C-Crystal City; L-Lytle; T-Taylor; UR-Uvalde Research; U1-Uvalde farmer field #1; U2-Uvalde farmer field #2

Results and Discussion

As seen in Figure 1, the measured values of leaf osmotic potential at full turgor (LOPFT) and leaf dry matter content (LDMC) were strongly negatively correlated, but the values from the irrigated and dryland fields were described by different regression lines: $LOPFT = 0.02408 - 7.328 \text{ LDMC}$ ($R^2=63.1\%$, Irrigated), $LOPFT = -0.8234 - 3.362 \text{ LDMC}$ ($R^2=15.1\%$, Dryland). The slopes of the two regression lines are highly significantly different ($p<0.0005$). This means that for the same values of osmotic potential, cotton leaves from dryland tended to invest more carbon in leaf construction than those from irrigated fields. From panels (A) and (B) of Figure 2, we can see that leaf osmotic potential was positively related to lint yield in irrigated, but not in dryland management. In panels (C) and (D), we can see that dry matter content had positive, or marginally positive, linear relationship with lint yield in dryland fields in both sampling stages; however, the relationship for irrigated fields was significantly negative in the early bloom stage, but not in the peak bloom stage. This suggest that under dryland production, a high carbon investment

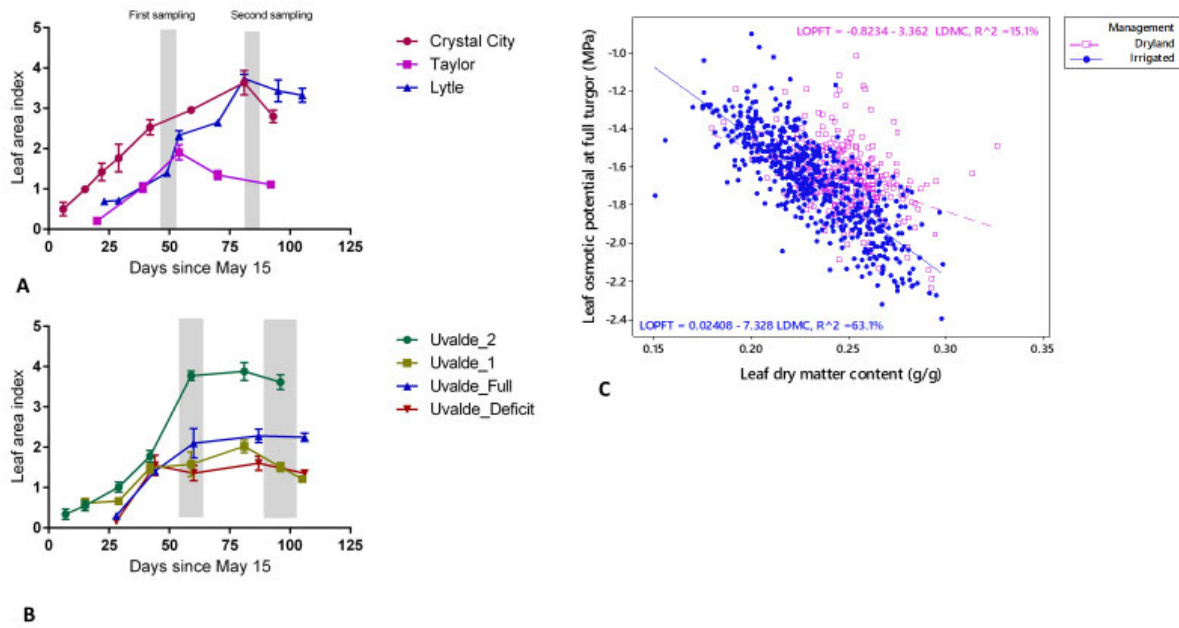


Figure 1. (A) and (B). Seasonal trends of leaf area index measured at different cotton fields in the 2020 growing season. Error bars indicate standard errors of the means (n=3-5). The shaded bars indicate the first sampling (early bloom) and second sampling (peak bloom) of cotton leaves used for leaf water relations traits measurement. (C). Relationship between leaf osmotic potential at full turgor (LOPFT) and leaf dry matter content (LDMC) for 924 cotton leaves measured in 2020.

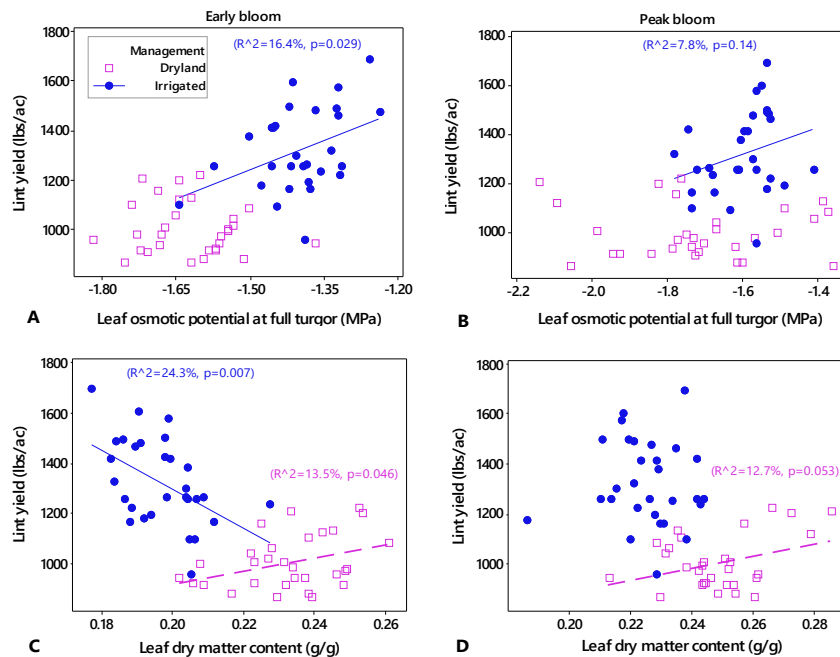


Figure 2. Relationships between cotton lint yield and leaf water relations traits under dryland and irrigated production regimes in 2020.

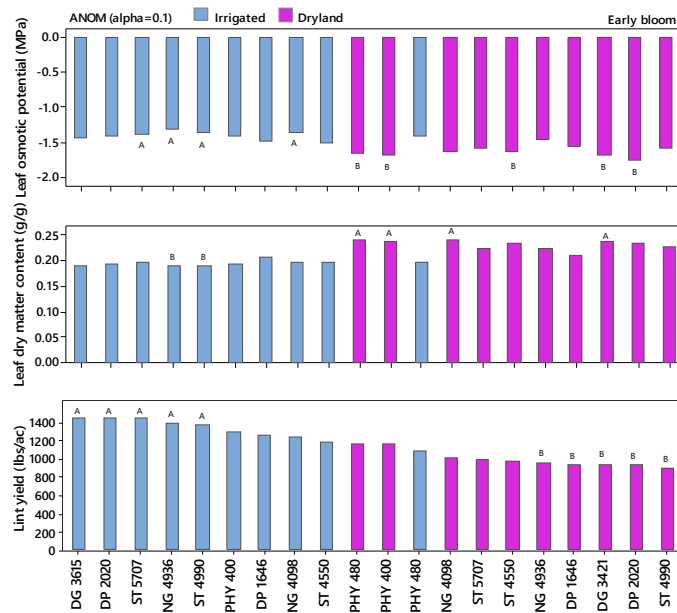


Figure 3. Leaf water relations traits and lint yield for 13 cotton varieties planted under dryland and irrigated production regimes in 2020.

in cotton leaves was associated with an increased lint yield, which is different from the situation of irrigated production.

In Figure 3, the lint yields for 13 cotton varieties planted under irrigated and dryland fields were ranked and compared using Analysis of Means (ANOM). Different capital letters indicate significant differences in lint yield from the mean yield. The data for leaf osmotic potential and dry matter content are also shown for the respective varieties. We can see that the lint yield for two PhytoGen varieties (PHY 400 and PHY 480) under dryland production was comparable with several varieties grown under irrigated management. These two PhytoGen varieties also had a lower osmotic potential and a higher leaf dry matter content, suggesting high drought tolerance. Five varieties (DG 3615, DP 2020, ST 5707, ST 4990, and NG 4936) displayed good performance under irrigated production, and ST 4990 and NG 4936 also showed leaf traits indicative of low drought tolerance and fast growth.

Our data indicate that cotton varieties that showed good yield performance under irrigated production regime may not equally do well under dryland production, and vice versa, suggesting the existence of different mechanisms in the current cotton varieties for coping with water stress (Claeys & Inzé, 2013; Skirycz et al., 2011). Yet, different from the dichotomy of surviving vs. exploitive resource use strategy in natural vegetation (Dong & Zhang, 2001; Wright et al. 2004), in agricultural crops, the economic yield becomes an indispensable part of the trait-performance relationship.

Conclusions

Based on measured leaf water relations traits of 43 cotton varieties, we show that increased investment of carbon in leaf construction in cotton varieties growing under dryland production was associated with an increased lint yield, which was in contrast to the trend displayed in irrigated production regime. This suggests that the trait-yield relationship is environment-dependent. Specifically, for a better yield performance, leaf osmotic potential and leaf dry matter content in cotton genotypes may be selected in different directions depending on whether the target environment is dryland or irrigated production. Under dryland production, a higher leaf dry matter content appears to be important, while under irrigated production, a higher osmotic potential is an important trait to look for.

Acknowledgements

We acknowledge the funding support from Texas State Support Committee/Cotton Incorporated, as well as from USDA NIFA. We appreciate Nathan Alonzo at Texas A&M University for assistance in the field work. We thank collaborating farmers in southwest and central Texas who allowed us to use their fields to do cotton research.

References

- Bartlett, M.K., C. Scoffoni, R. Ardy, Y. Zhang, S. Sun, K. Cao, and L. Sack. 2012. Rapid determination of comparative drought tolerance traits: using an osmometer to predict turgor loss point. *Methods Ecol. Evol.* 3: 880–888
- Black, C.A. 1968. *Soil-Plant Relationships*. 2nd Ed. John Wiley & Sons, Inc., New York, NY. 792 pp.
- Cheung, Y.N.S., M. T. Tyree, and J. Dainty. 1975. Water relations parameters on single leaves obtained in a pressure bomb and some ecological interpretations. *Can. J. Bot.* 53: 1342–1346.
- Claeys, H., and D. Inzé. 2013. The agony of choice: How plants balance growth and survival under water-limiting conditions. *Plant Physiol.* 162: 1768–1779.
- Dong, X. and X. Zhang. 2001. Some observations of the adaptations of sandy shrubs to the arid environment in the Mu Us Sandland: leaf water relations and anatomic features. *J. Arid Environ.* 48: 41–48.
- Griffin-Nolan, R., T.W. Ocheltree, K.E. Mueller, D.M. Blumenthal, J.A. Kray, and A.K. Knapp. 2019. Extending the osmometer method for assessing drought tolerance in herbaceous species. *Oecologia*. 189: 253–263
- Mart, K.B., E.J. Veneklaas, and H. Bramley. 2016. Osmotic potential at full turgor: an easily measurable trait to help breeders select for drought tolerance in wheat. *Plant breeding*. 135: 279–285.
- Monson, R.K., and S.D. Smith. 1982. Seasonal water potential components of Sonoran Desert plants. *Ecology*. 63: 113–123.
- Petrizzellis, F., T. Savi, G. Bacaro, and A. Nardini. 2019. A simplified framework for fast and reliable measurements of leaf turgor loss point. *Plant Physiol. Biochem.* 139: 395–399.
- Robichaux, R.H., K.E. Holsinger, and S. R. Morse. 1986. Turgor maintenance of Hawaiian *Dubautia* species: the role of variation in tissue osmotic and elastic properties. In: T.J. Givnish (Ed.) *On the Economy of Plant Form and Function*. Cambridge University Press. Pages 353–380.
- Schulze, E.-D., R.H. Robichaux, J. Grace, P.W. Rundel, and J. R. Ehleringer. 1987. Plant water balance. *BioScience*. 37: 30–37.
- Skirycz, A., K. Vandenbroucke, P. Clauw, K. Maleux, B. De Meyer, S. Dhondt, A. Pucci, N. Gonzalez, F. Hoerberichts, V.B. Tognetti, M. Galbiati, C. Tonelli, F. Van Breusegem, M. Vuylsteke, and D. Inzé. 2011. Survival and growth of *Arabidopsis* plants given limited water are not equal. *Nat. Biotechnol.* 29: 212–214.
- Wright, I.J., P.B. Reich, M. Westoby, D.D. Ackerly, Z. Baruch, F. Bongers, et al. 2004. The worldwide leaf economics spectrum. *Nature*. 428: 821–827