

ENGINEERING AND GINNING

Combined Mote System Total Particulate Emission Factors and Rates for Cotton Gins

Michael D. Buser, Derek P. Whitelock, J.Clif Boykin, Gregory A. Holt

ABSTRACT

This report is part of a project to characterize cotton gin emissions from the standpoint of stack sampling. The impetus behind this project was the urgent need to collect additional cotton gin emissions data to address current regulatory issues. A key component of this study was focused on Environmental Protection Agency (EPA) total particulate emission factors. EPA AP-42 emission factors are generally assigned a rating, from A (Excellent) to E (Poor), to assess the quality of the data being referenced. Current EPA total particulate emission factor ratings for cotton gins are extremely low. Cotton gin data received these low ratings because the data were collected almost exclusively from a single geographical region. The objective of this study was to collect additional total particulate emission factor data for combined mote systems from cotton gins located in regions across the cotton belt using EPA-approved stack sampling methodology. The project plan included sampling seven cotton gins. Key factors for selecting specific cotton gins included: 1) facility location, 2) production capacity, 3) processing systems and 4) abatement technologies. Two gins with combined 1st and 2nd mote system exhausts were sampled. The average production rate during testing for the two gins was 33.7 bales/h. The average combined mote system total particulate emission factor based on two tests (six total test runs) was 0.146 kg/227-kg bale (0.321 lb/500-lb bale). This average total particulate emission factor was higher than that currently published in 1996 EPA AP-42,

which was 0.13 kg/bale (0.28 lb/bale). The emission rate from test averages ranged from 3.45 to 6.45 kg/h (7.61-14.23 lb/h).

United States (U.S.) Environmental Protection Agency (EPA) emission factors published in EPA's Compilation of Air Pollution Emission Factors, AP-42 (EPA, 1996b) are assigned a rating that is used to assess the quality of the data being referenced. Ratings can range from A (Excellent) to E (Poor). Current EPA emission factor quality ratings for total particulate from cotton gins are extremely low. Cotton gin data received these low ratings because it was collected almost exclusively from a single geographical region, far western United States (EPA, 1996a). Cotton ginners' associations across the cotton belt, including the National, Texas, Southern, Southeastern, and California associations, agreed that there was an urgent need to collect additional cotton gin emissions data to address current regulatory issues. Working with the cotton ginning associations across the country and state and federal regulatory agencies, Oklahoma State University and United States Department of Agriculture - Agricultural Research Service (USDA- ARS) researchers developed a proposal and sampling plan that was initiated in 2008 to address this need for additional data. This report is part of a series that details cotton gin emissions measured by stack sampling. Each manuscript in the series addresses a specific cotton ginning system. The systems covered in the series include: unloading, 1st stage seed-cotton cleaning, 2nd stage seed-cotton cleaning, 3rd stage seed-cotton cleaning, overflow, 1st stage lint cleaning, 2nd stage lint cleaning, combined lint cleaning, cyclone robber, 1st stage mote, 2nd stage mote, combined mote, mote cyclone robber, mote cleaner, mote trash, battery condenser and master trash. This report focuses on total particulate emissions from combined mote systems.

The 1996 EPA AP-42 average total particulate emission factor for the mote fan (1st and 2nd stage mote systems combined) was 0.13 kg (0.28 lb) per 217-kg [480-lb] equivalent bale with a range of 0.045 to 0.47 kg (0.099-1.0 lb) per bale (EPA, 1996a,

M.D. Buser*, Biosystems and Agricultural Engineering
Oklahoma State University, 214 Agricultural Hall; Stillwater,
OK 74078; D.P. Whitelock, USDA-AR Southwestern Cotton
Ginning Research Laboratory, 300 E College, P.O. Box 578,
Mesilla Park, NM 88047; J.C. Boykin, USDA-ARS Cotton
Ginning Research Unit, 111 Experiment Station Road, P.O.
Box 256, Stoneville, MS 38776; and G.A. Holt, USDA-ARS
Cotton Production and Processing Research Unit, 1604 E FM
1294, Lubbock, TX 79403

*Corresponding autor: buser@okstate.edu

1996b). This average and range was based on nine tests conducted in one geographical location. The EPA emission factor quality rating was D, which is the second lowest possible rating (EPA, 1996a).

Seed-cotton is a perishable commodity that has no real value until the fiber and seed are separated (Wakelyn et al., 2005). Cotton must first be processed or ginned at the cotton gin to separate the fiber and seed, producing 227-kg (500-lb) bales of marketable cotton fiber. Cotton ginning is considered an agricultural process and an extension of the harvest by several federal and state agencies (Wakelyn et al., 2005). Although the main function of the cotton gin is to remove the lint fiber from the seed, many other processes also occur during ginning, such as cleaning, drying, and packaging the lint. Pneumatic conveying systems are the primary method of material handling in the cotton gin. As material reaches a processing point, the conveying air is separated and emitted outside the gin through a pollution control device. The amount of dust emitted by a system varies with the process and the condition of the material in the process.

Cotton ginning is a seasonal industry lasting from 75 to 120 days, depending on the size and condition of the crop. Although the trend for U.S. cotton production remained generally flat at about 17 million bales per year during the last 20 years, annual production varied greatly for various reasons, including climate and market pressure (Fig. 1). The number of active gins in the U.S. has not remained constant, but has steadily declined to fewer than 700 in 2011. Consequently, the average volume of cotton handled by each gin has risen and gin capacity has increased to an average of about 25 bales per hour across the U.S. cotton belt (Valco et al., 2003, 2006, 2009, 2012).

The typical cotton gin facility includes: unloading system, dryers, seed-cotton cleaners, gin stands, overflow collector, lint cleaners, battery condenser, bale packaging system, and trash handling systems (Fig. 2); however, the number and type of machines and processes varies. Each of these systems serves a unique function with the ultimate goal of ginning the cotton to produce a marketable product. Raw seed-cotton harvested from the field is compacted into large units called modules for delivery to the gin. The unloading system removes seed-cotton either mechanically or pneumatically from the module feed system and conveys the seed-cotton to the seed-cotton cleaning systems. Seed-cotton cleaning systems dry the seed-cotton and remove

foreign matter prior to ginning. Ginning systems also remove foreign matter and separate the cotton fiber from the seed. Lint cleaning systems further clean the cotton lint after ginning. The battery condenser and packaging systems combine lint from the lint cleaning systems and compress the lint into dense bales for easy transport. Gin systems produce some type of by-product or trash, such as rocks, soil, sticks, hulls, leaf material, and short or tangled immature fiber (motes), as a result of processing the seed-cotton or lint. These streams of by-products must be removed from the machinery and handled by trash collection systems. These trash systems typically further process the by-products (e.g., mote cleaners) and/or consolidate the trash from the gin systems into a hopper or pile for subsequent removal.

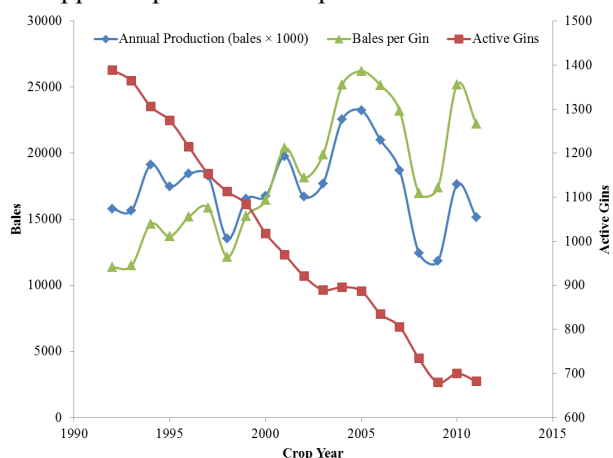


Figure 1. Annual U.S. cotton production, active U.S. gins, and average ginning volume (bales per gin) (NASS, 1993-2012).

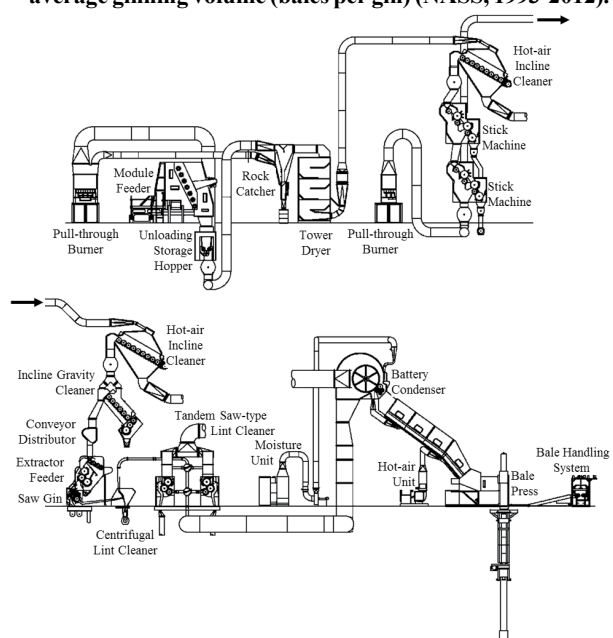


Figure 2. Typical modern cotton gin layout (Courtesy Lummus Corporation, Savannah, GA).

Once the seed and lint are separated at the gin stand, the lint is cleaned by one or more stages of lint cleaning. The material removed by lint cleaning is referred to as motes and is handled by the mote systems (Fig. 3). Motes are pneumatically conveyed by suction away from the lint cleaners, through a centrifugal fan, to one or two particulate abatement cyclones. Depending on the gin facility, the 1st and 2nd stages of lint cleaning may be combined and share a mote system, thus sharing a fan and abatement devices, or lint cleaning stages may have mote systems that operate independently with separate fans and cyclones. The function of the 1st and 2nd stage mote systems with separate or combined exhausts is the same and it is expected that the total particulate emissions from a combined mote system would be similar to the summation of the 1st and 2nd stage mote systems with separate exhausts. The material handled by the mote cyclones typically includes small trash and particulate, and large amounts of lint fibers (Fig. 4).

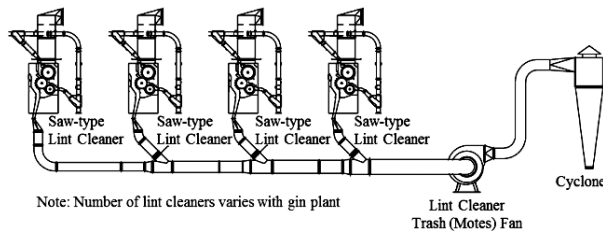


Figure 3. Typical cotton gin combined mote system layout (Courtesy Lummus Corporation, Savannah, GA).



Figure 4. Photograph of typical trash captured by the combined mote system cyclones.

Cyclones are the most common particulate matter (PM) abatement devices used at cotton gins. Standard cyclone designs used at cotton ginning facilities are the 2D2D and 1D3D (Whitelock, et al., 2009). The first D in the designation indicates the length

of the cyclone barrel relative to the cyclone barrel diameter and the second D indicates the length of the cyclone cone relative to the cyclone barrel diameter. A standard 2D2D cyclone (Fig. 5) has an inlet height of $D/2$ and width of $D/4$ and design inlet velocity of 15.2 ± 2 m/s (3000 ± 400 fpm). The standard 1D3D cyclone (Fig. 5) has the same inlet dimensions as the 2D2D or may have the original 1D3D inlet with height of D and width $D/8$. Also, it has a design inlet velocity of 16.3 ± 2 m/s (3200 ± 400 fpm).

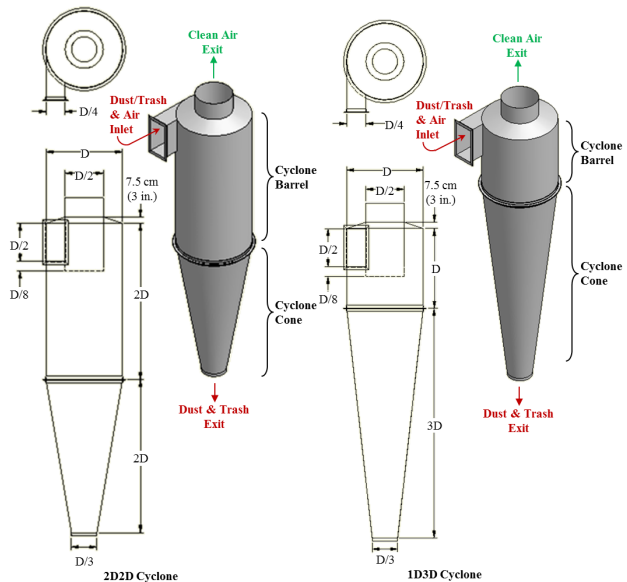


Figure 5. 2D2D and 1D3D cyclone schematics.

The objective of this study was to collect additional total particulate emission factor data for combined mote systems with cyclones for emissions control at cotton gins located in regions across the cotton belt based on EPA-approved stack sampling methodologies.

METHODS

Two advisory groups were established for this project. The industry group consisted of cotton ginning industry leaders and university and government researchers. The air quality group included members from state and federal regulatory agencies, and university and government researchers. Both groups were formed to aid in project planning, gin selection, data analyses, and reporting. The project plan was described in detail by Buser et al. (2012).

Seven cotton gins were sampled across the cotton belt. Key factors for selecting specific cotton gins included: 1) facility location, 2) production capacity, 3) processing systems and 4) abatement technologies.

Operating permits, site plans, and aerial photographs were reviewed to evaluate potential sites. On-site visits were conducted on all candidate gins to evaluate the process systems and gather information including system condition, layout, capacities, and standard operation. Using this information, several gins from each selected geographical region were selected and prioritized based on industry advisory group discussions. Final gin selection from the prioritized list was influenced by crop limitations and adverse weather events in the region.

Based on air quality advisory group consensus, EPA Method 17 (CFR, 1978) was used to sample the combined mote system at each gin. Method 17 was selected over Method 5 (CFR, 1987) because of the relatively low stack temperatures found at cotton gins. Method 5 requires a heated glass probe and filter holder to maintain the sampled gas temperature of 120°C (248°F). Key benefits of using Method 17 over Method 5 occur when particulate concentrations are independent of temperature and the sampled gas contains no liquid droplets or is not saturated with water vapor, the heating systems can be eliminated and sampling can occur at stack temperature with an in-stack filter. Methodology for sampling total particulate called for withdrawing particulate-laden stack gas isokinetically (the velocity of the gas entering the sampler was equal to the velocity of the gas in the stack) through a button-hook nozzle and then collecting particles on an in-stack filter (Fig. 6). The methods for retrieving the filter and conducting acetone washes of the sampling nozzle are described in Method 17 (CFR, 1978). The mass of particulate on the filter and in the nozzle wash was determined by gravimetric analyses. The total particulate mass was determined by summing the mass of particulates on the filter and the front half wash. Stack gas temperature and moisture content were also measured using EPA Method 17.

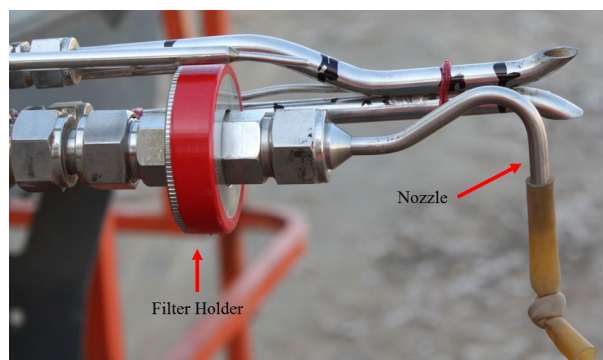


Figure 6. EPA Method 17 total particulate button-hook nozzle and in-stack filter holder photograph.

Only one stack from each combined mote system was tested. For systems with multiple stacks, it was assumed that emissions from each stack of the system were equivalent. The total particulate emissions for the system were calculated by multiplying the measured emission rates by the total number of cyclones used to control the process tested (EPA, 1996a). To obtain reliable results, the same technician from the same certified stack sampling company (Reliable Emissions Measurements, Auberry, CA), trained and experienced in stack sampling cotton gins, conducted all the tests at all the cotton gins.

All stack sampling equipment was purchased from Apex Instruments (Fuquay-Varina, NC) and met Method 17 specifications. The sampling media were 47 mm Zefluor filters (Pall Corporation, Port Washington, NY) and the sample recovery and analytical reagent was American Chemical Society certified acetone (A18-4, Fisher Chemical, Pittsburgh, PA – assay $\geq 99.5\%$). Filters and wash tubs and lids were pre-labeled and pre-weighed and stored in sealed containers at the USDA-Agricultural Research Service Air Quality Lab (AQL) in Lubbock, TX, and then transported to each test site. Prior to testing, the technician calibrated all sampling equipment according to EPA Method 17.

Each cyclone selected for testing was fitted with a cyclone stack extension that incorporated two sampling ports (90° apart) and airflow straightening vanes to eliminate the cyclonic flow of the air exiting the cyclone (Fig. 7). The extensions were designed to meet EPA criteria (EPA, 1989) with an overall length of 3 m (10 ft) and sampling ports 1.2-m (48-in) downstream from the straightening vanes and 0.9-m (36-in) upstream from the extension exit.

The tests were conducted by the technician in an enclosed sampling trailer at the base of the cyclone bank (Fig. 8). Sample retrieval, including filters and nozzle acetone washes, was conducted according to Method 17. After retrieval, filters were sealed in individual Petri dishes and acetone washes were dried on-site in a conduction oven at 49°C (120°F) and then sealed with pre-weighed lids and placed in individual plastic bags for transport to the AQL in Lubbock, TX for gravimetric analyses. During testing, bale data (ID number, weight, and date/time of bale pressing) were either manually recorded by the bale press operator or captured electronically by the gin's computer system for use in calculating emission factors in terms of kg/227-kg bale (lb/500-lb

bale). Emission factors and rates were calculated in accordance with Method 17 and American Society of Agricultural Engineers (ASAE) Standard S582 (ASABE, 2005).

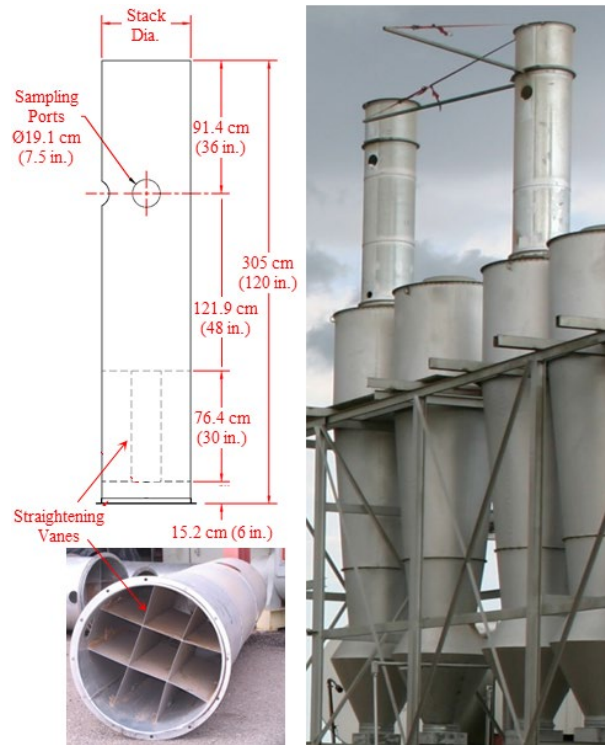


Figure 7. Schematic and photographs of stack extensions with sampling port and straightening vanes (rail attached to extension above sampling port, at right, supports sampling probe during testing traverse).

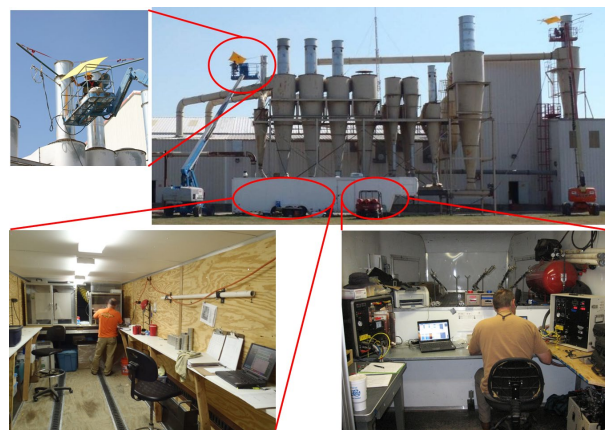


Figure 8. Clockwise from top right: cotton gin stack sampling with air quality lab trailer and technicians on lifts; certified stack sampling technician in the trailer control room conducting tests; sample recovery in trailer clean room; technician operating the probe at stack level.

All laboratory analyses were conducted at the AQL. All filters were conditioned in an environmental chamber ($21 \pm 2^\circ\text{C}$ [$70 \pm 3.6^\circ\text{F}$]; $35 \pm 5\%$ RH) for 48 h prior to gravimetric analyses. Filters were weighed

in the environmental chamber on a Mettler MX-5 microbalance (Mettler-Toledo Inc., Columbus, OH – $1 \mu\text{g}$ readability and $0.9 \mu\text{g}$ repeatability) after being passed through an anti-static device. The MX-5 microbalance was leveled on a marble table and housed inside an acrylic box to minimize the effects of air currents and vibrations. To reduce recording errors, weights were electronically transferred from the microbalance directly to a spreadsheet. Technicians wore latex gloves and a particulate respirator mask to avoid contamination. AQL procedures required that each sample be weighed three times. If the standard deviation of the weights for a given sample exceeded $10 \mu\text{g}$, the sample was reweighed. Gravimetric procedures for the acetone wash tubs were the same as those used for filters.

In addition to gravimetric analyses, each sample was visually inspected for unusual characteristics, such as cotton lint content or extraneous material. Digital pictures were taken of all filters and washes for documentation purposes. After the laboratory analyses were completed all stack sampling, cotton gin production, and laboratory data were merged.

Two of the seven gins (E and G) were designed so that the exhaust airstreams from the 1st and 2nd stage mote systems were combined. The combined systems sampled were typical for the industry, but varied among the gins. The lint was cleaned in three 1st stage lint cleaners and then three 2nd stage lint cleaners at gin E. The trash removed from the six cleaners was combined in one mote system and pneumatically conveyed through a fan and exhausted through one or more cyclones (Fig. 9). The combined 1st and 2nd stage mote system at gin G was essentially the same, except it pulled trash from two 1st stage lint cleaners and two 2nd stage lint cleaners (Fig. 10).

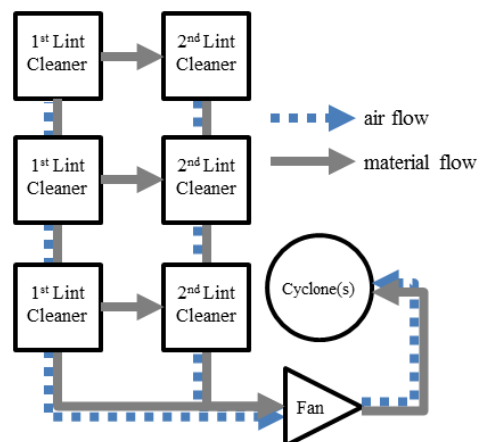


Figure 9. Schematic of combined first and second stage mote system pulling material from three first and second stage lint cleaners (gin E).

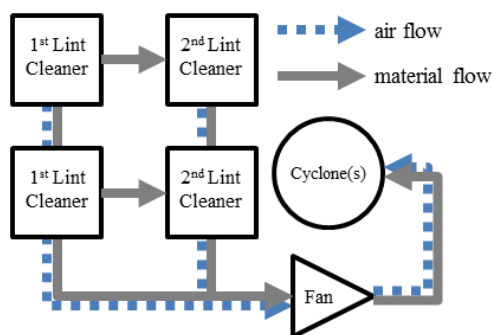


Figure 10. Schematic of combined first and second stage mote system pulling material from two first and second stage lint cleaners (gin G).

Both combined mote systems sampled utilized 1D3D cyclones to control emissions (Table 1 and Fig. 5). The system airstream for both gins was exhausted through a single cyclone. Inlets on both the combined mote system cyclones were 2D2D type. Standard cones were present on combined mote system cyclones at both gins. The cyclone tested at gin G had a mote system cyclone robber pulling airflow from its trash exit. This configuration helped remove lint and other trash from the cyclone that would otherwise circulate near the trash exit at the bottom of the cone for a period of

time before dropping out. The design characteristics for all of the combined mote system cyclones tested, if properly designed and maintained, are recommended for controlling cotton gin emissions (Whitelock et al., 2009).

RESULTS

Table 2 shows the test parameters for each Method 17 test run for the combined mote systems sampled at the two gins. The average ginning rate for the two gins was 33.7 bales/h and the test average ginning rate at each gin ranged from 32.7 to 34.7 bales/h (based on 227-kg [500-lb] equivalent bales). The 1D3D cyclones were all operated with inlet velocities within design criteria, 16.3 ± 2 m/s (3200 ± 400 fpm).

There are criteria specified in EPA Method 17 for test runs to be valid for total particulate measurements (CFR, 1978). Isokinetic sampling must fall within the EPA defined range of $100 \pm 10\%$. All tests met the isokinetic criteria (Table 2). The stack gas temperatures ranged from 21 to 41°C (70-106°F) and moisture content ranged from 1.0 to 1.9% w.b.

Table 1. Abatement device configuration^z for combined mote systems tested.

Gin	Cyclone Type	Inlet Design	Systems per Gin	Cyclones per Gin	Configuration	Cone Design	Trash exits to ^y
E	1D3D	2D2D	1	1	single	standard	mote cleaner
G	1D3D	2D2D	1	1	single	standard	Robber

^z Figure 5

^y Systems to remove material from cyclone trash exits: mote cleaner = gin machine that further cleans fiber captured by system; robber = pneumatic suction system

Table 2. Cotton gin production data and stack sampling performance metrics for the combined mote systems.

Gin	Test Run	Ginning Rate, bales/h ^z	Cyclone Inlet Velocity,		Isokinetic Sampling, %	Stack Gas		
			m/s	Fpm		Moisture Content, % w.b.	Temperature	
							°C	°F
E	1	34.4	17.6	3467	102	1.9	40	105
	2	34.9	17.9	3524	103	1.4	41	106
	3	34.7	18.1	3566	101	1.1	41	106
	Test Average	34.7	17.9	3519				
G	1	33.6	16.7	3294	97	1.0	21	70
	2	30.4	16.8	3313	99	1.4	24	76
	3	34.0	16.7	3290	99	1.8	27	80
	Test Average	32.7	16.8	3299				
System Average		33.7	17.3	3409				

^z 227 kg (500 lb) equivalent bales

Table 3. Total particulate emissions data for the combined mote system.

Gin	Test Run	Emission Rate,		Emission Factor,	
		kg/h	lb/h	kg/bale ^z	lb/bale ^z
E	1	6.10	13.44	0.177	0.390
	2	6.55	14.44	0.187	0.413
	3	6.71	14.80	0.193	0.426
	Test Average (n=3)	6.45	14.23	0.186	0.410
G	1	3.55	7.83	0.106	0.233
	2	3.11	6.86	0.102	0.225
	3	3.70	8.15	0.109	0.239
	Test Average (n=3)	3.45	7.61	0.106	0.233
System Average (n=2)				0.146	0.321

^z 227 kg (500 lb) equivalent bales

Total particulate emissions data (emission rates and corresponding emission factors) for the combined mote systems are shown in Table 3. The system average emission factor for the two gins was 0.146 kg/bale (0.321 lb/bale). The test average emission factors ranged from 0.106 to 0.186 kg (0.233-0.410 lb) per bale. The average combined mote system total particulate emission factor for this project was about 1.15 times that published in the current 1996 EPA AP-42 for the mote fan (0.13 kg/bale [0.28 lb/bale]) (EPA, 1996a, b), which is an equivalent system to the 1st and 2nd stage mote systems. The range of test average total particulate emissions determined for this project fell within the AP-42 emission factor data range. The test average emission rates ranged from 3.45 to 6.45 kg/h (7.61-14.23 lb/h).

Figure 11 shows an example of samples recovered from a typical combined mote system test run. Often, there were cotton lint fibers in the cotton gin cyclone exhausts. Therefore, it was not unusual to find lint fiber on the Method 17 filter or in the front half wash, which is included in the total particulate emissions. Figure 12 shows an example of a front half wash recovered from an atypical combined mote system test run with heavy loading and no lint present.

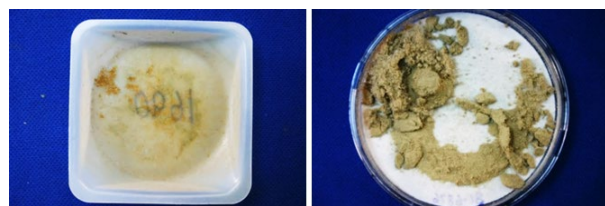


Figure 11. Typical EPA Method 17 filter and sampler head acetone wash from the combined mote system. From left to right: front half wash and filter.

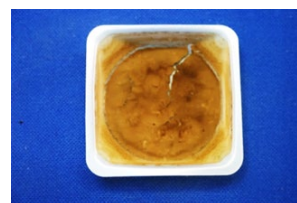


Figure 12. EPA Method 17 sampler head acetone wash from the combined mote system with heavy loading and no lint present.

SUMMARY

Two cotton gins with combined mote cleaning systems were sampled using EPA Method 17 to collect additional data to improve the EPA AP-42 total particulate emission factor quality ratings for cotton gins. The two gins were designed so that the air streams from the 1st and 2nd mote systems were combined. The tested systems were similar in design and typical of the ginning industry. Both system exhausts were equipped with 1D3D cyclones for emissions control with some variations in inlet and cone design. The average production rate during testing for the two gins was 33.7 bales/h. The average combined mote system total particulate emission factor based on the two gins tested (6 total test runs) was 0.146 kg/227-kg bale (0.321 lb/500-lb bale). The average combined mote cleaning system total particulate emission factor for this project was about 1.12 times that currently published in the 1996 EPA AP-42 for the mote fan, which is 0.13 kg/bale (0.28 lb/bale) (EPA, 1996 a, b). The gin test average emission rates ranged from 3.45 to 6.45 kg/h (7.61-14.23 lb/h).

ACKNOWLEDGEMENT

The authors appreciate the cooperating gin managers and personnel who generously allowed and endured sampling at their gins. In addition, we thank California Cotton Ginners' and Growers' Association, Cotton Incorporated, San Joaquin Valleywide Air Pollution Study Agency, Southeastern Cotton Ginners' Association, Southern Cotton Ginners' Association, Texas Cotton Ginners' Association, Texas State Support Committee, and The Cotton Foundation for funding this project. This project was supported in-part by the USDA National Institute of Food and Agriculture Hatch Project OKL02882. The authors also thank the Cotton Gin Advisory Group and Air Quality Advisory Group for their involvement and participation in planning, execution, and data analysis for this project that is essential to developing quality data that will be used by industry, regulatory agencies, and the scientific community. The advisory groups included: the funding agencies listed above, California Air Resources Board, Missouri Department of Natural Resources, National Cotton Council, National Cotton Ginners' Association, North Carolina Department of Environment and Natural Resources, San Joaquin Valley Air Pollution Control District, Texas A&M University, Texas Commission on Environmental Quality, USDA-NRCS National Air Quality and Atmospheric Change, and U.S. Environmental Protection Agency (national, Region 4 and 9).

DISCLAIMER

Mention of trade names or commercial products in this publication is solely for the purpose of providing specific information and does not imply recommendation or endorsement by the Oklahoma State University or U.S. Department of Agriculture. Oklahoma State University and USDA are equal opportunity providers and employers.

The statements and conclusions in this report are those of the USDA-ARS and Oklahoma State University and not necessarily those of the California Air Resources Board, the San Joaquin Valleywide Air Pollution Study Agency, or its Policy Committee, their employees or their members. The mention of commercial products, their source, or their use in connection with material reported herein is not to be construed as actual or implied endorsement of such products.

REFERENCES

- American Society of Agricultural and Biological Engineers (ASABE). 2005. Cotton Gins – Method of Utilizing Emission Factors in Determining Emission Parameters. ASAE S582 March 2005. American Society of Agricultural and Biological Engineers, St. Joseph, MI.
- Buser, M.D., D.P. Whitelock, J.C. Boykin, and G.A. Holt. 2012. Characterization of cotton gin particulate matter emissions—Project plan. *J. Cotton Sci.* 16:105–116.
- Code of Federal Regulations (CFR). 1978. Method 17—Determination of particulate emissions from stationary sources (in-stack filtration method). 40 CFR 60 Appendix A-6. Available at <http://www.epa.gov/ttn/emc/promgate/m-17.pdf> (verified August 2012).
- Code of Federal Regulations (CFR). 1987. Method 5—Determination of particulate matter emissions from stationary sources. 40 CFR 60 Appendix A-3. Available at <http://www.epa.gov/ttn/emc/promgate/m-05.pdf> (verified August 2012).
- Environmental Protection Agency (EPA). 1989. Particulate sampling in cyclonic flow. U.S. Environmental Protection Agency, Washington, DC. Available online at <http://www.epa.gov/ttn/emc/guidlnd/gd-008.pdf> (verified 2 Jan. 2013).
- Environmental Protection Agency (EPA). 1996a. Emission factor documentation for AP-42, Section 9.7, Cotton Ginning, (EPA Contract No. 68-D2-0159; MRI Project No. 4603-01, Apr. 1996).
- Environmental Protection Agency (EPA). 1996b. Food and agricultural industries: Cotton gins. *In* Compilation of air pollution emission factors, Volume 1: Stationary point and area sources. Publ. AP-42. U.S. Environmental Protection Agency, Washington, DC.
- National Agricultural Statistics Service (NASS). 1993-2012. Cotton Ginnings Annual Summary [Online]. USDA National Agricultural Statistics Service, Washington, DC. Available at <http://usda.mannlib.cornell.edu/MannUsda/viewDocumentInfo.do?documentID=1042> (verified 2 Jan. 2013).
- Valco, T.D., H. Ashley, J.K. Green, D.S. Findley, T.L. Price, J.M. Fannin, and R.A. Isom. 2012. The cost of ginning cotton – 2010 survey results. p. 616–619 *In* Proc. Beltwide Cotton Conference., Orlando, FL 3-6 Jan. 2012. Natl. Cotton Counc. Am., Cordova, TN.
- Valco, T.D., B. Collins, D.S. Findley, J.K. Green, L. Todd, R.A. Isom, and M.H. Wilcutt. 2003. The cost of ginning cotton – 2001 survey results. p. 662–670 *In* Proc. Beltwide Cotton Conference., Nashville, TN 6-10 Jan. 2003. Natl. Cotton Counc. Am., Memphis, TN.

- Valco, T.D., J.K. Green, R.A. Isom, D.S. Findley, T.L. Price, and H. Ashley. 2009. The cost of ginning cotton – 2007 survey results. p. 540–545 *In Proc. Beltwide Cotton Conference.*, San Antonio, TX 5-8 Jan. 2009. Natl. Cotton Counc. Am., Cordova, TN.
- Valco, T.D., J.K. Green, T.L. Price, R.A. Isom, and D.S. Findley. 2006. Cost of ginning cotton – 2004 survey results. p. 618–626 *In Proc. Beltwide Cotton Conference.*, San Antonio, TX 3-6 Jan. 2006. Natl. Cotton Counc. Am., Memphis, TN.
- Wakelyn, P.J., D.W. Thompson, B.M. Norman, C.B. Nevius, and D.S. Findley. 2005. Why Cotton Ginning is Considered Agriculture. *Cotton Gin and Oil Mill Press* 106(8): 5-9.
- Whitelock, D.P., C.B. Armijo, M.D. Buser, and S.E. Hughs. 2009 Using cyclones effectively at cotton gins. *Appl. Eng. Ag.* 25:563–576.